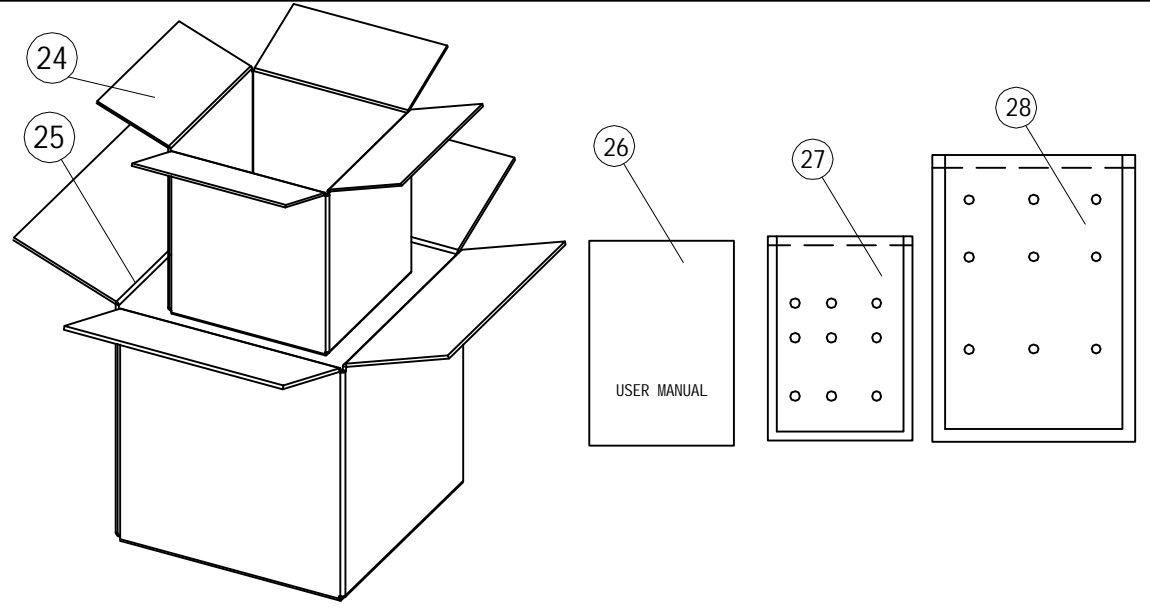
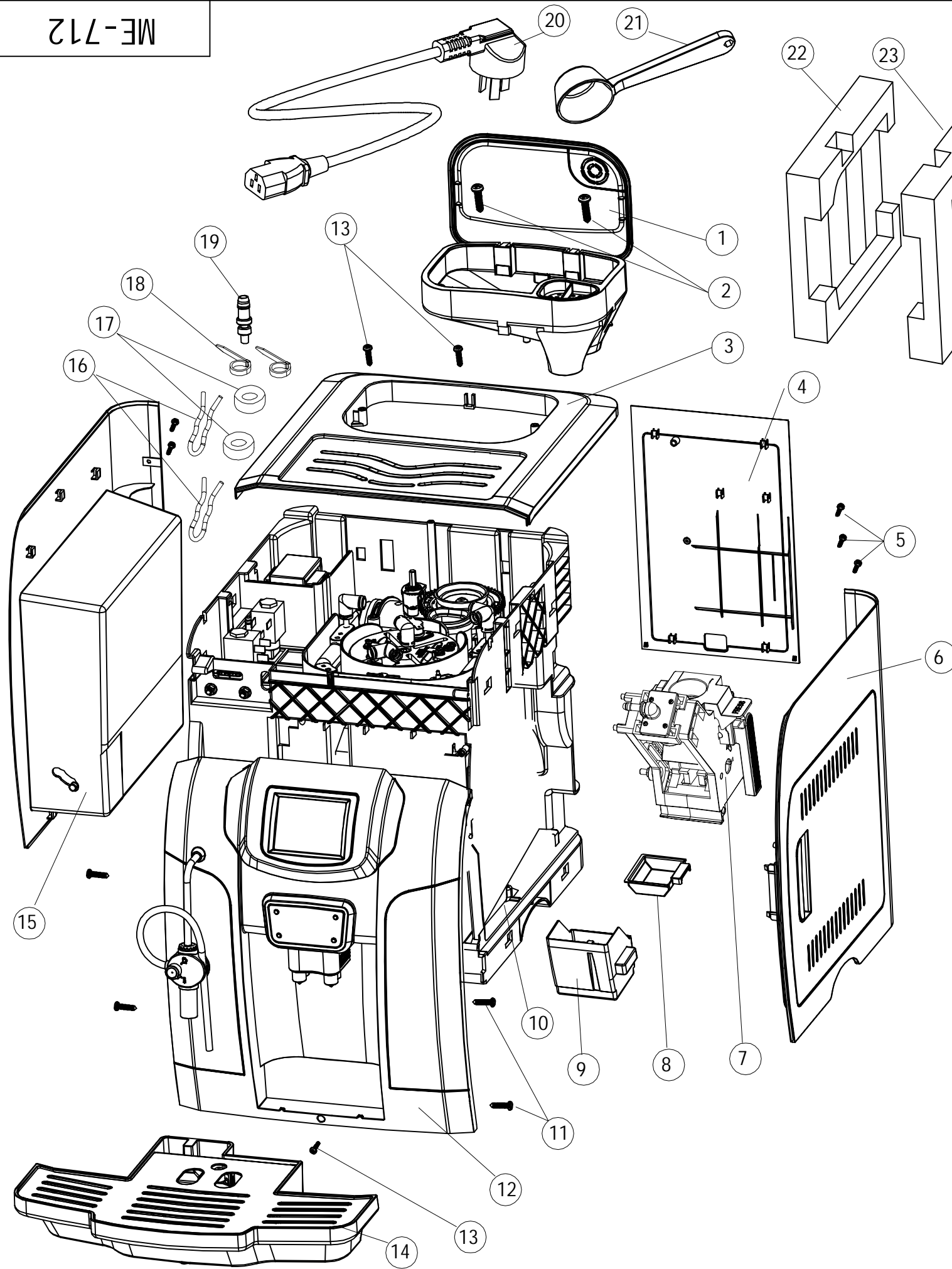


ME-712

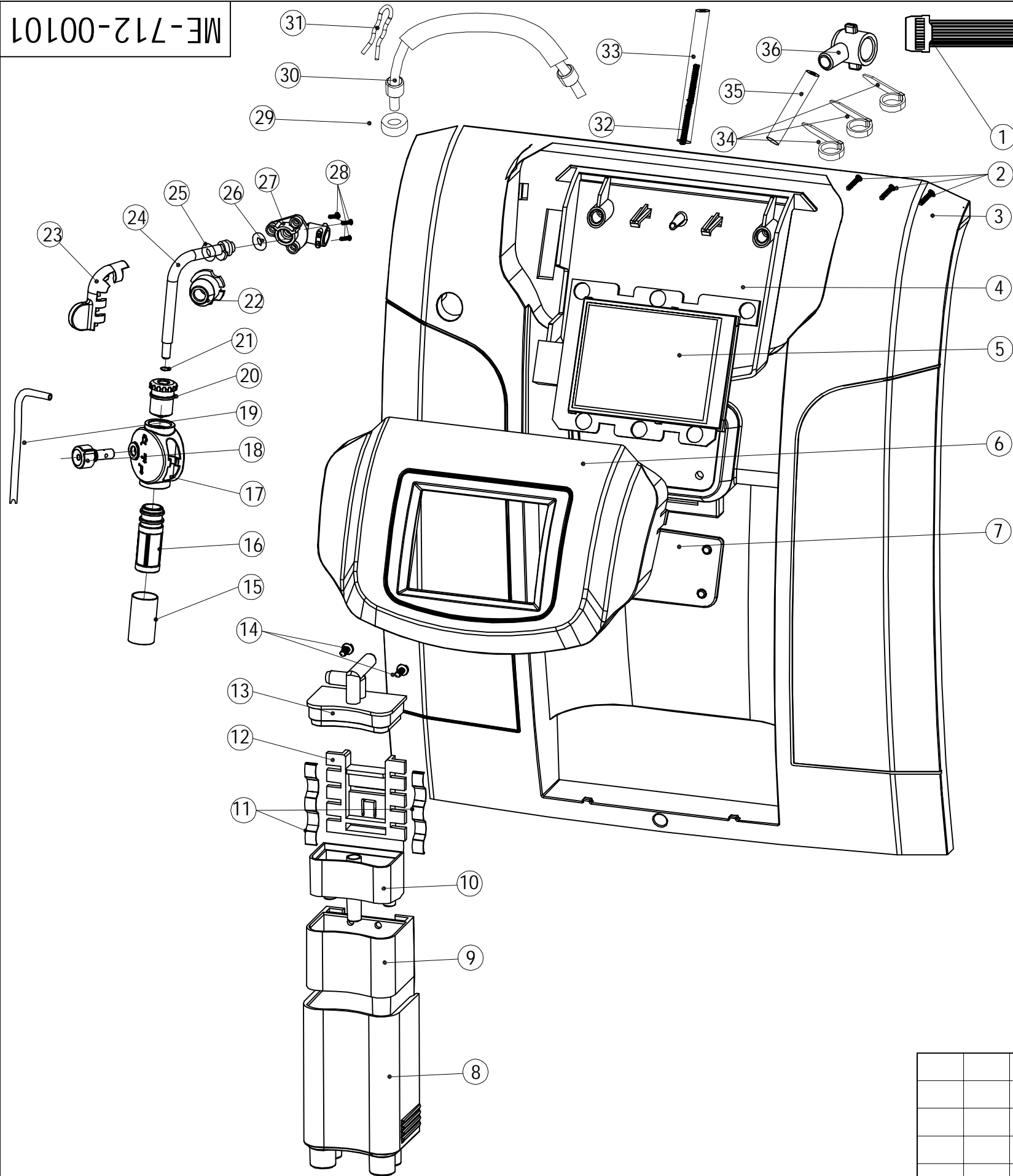


28	PE bag	ME-707-52208	PE 800*800*0.025	1
27	PE bag		PE 240*170	3
26	USER MANUAL		A5	1
25	outer cotton box	ME-712-52204	BE 6mm thick	1
24	inner cotton box	ME-712-52203	BE 6mm thick	1
23	right packing cover	ME-712-52202	genuine pearl cotton	1
22	left packing cover	ME-712-52201	genuine pearl cotton	1
21	coffee scoop			1
20	electrical wire		250V~10A 50HZ VDE	1
19	hot water pipe connect	ME-712-10810	PA66 A3EG6	1
18	ties		2.5*100	2
17	O-ring	ME-707-30904	High tear Silicone	2
16	pipe clamp		SUS304	2
15	left panel unit	ME-712-00500		1
14	drip pan unit	ME-712-00200		1
13	screw		#JTP 3*12 sus	3
12	front panel unit	ME-712-00101		1
11	screw		3*12	4
10	machine bracket unit	ME-712-00800		1
9	dregs box unit			1
8	dregs box	ME-707-11404	ABS PA757	1
7	Brewing core group unit	ME-707-01200		1
6	right panel unit	ME-712-00400		1
5	screw		3X12	5
4	back cover	ME-712-10802	ABS PA757	1
3	top cover unit	ME-712-01000	silicon	1
2	screw		+BTP4*14SUS	2
1	bean tank unit	ME-712-00300		1

NO.	NAME	Dwg NO.	Material & Specification	Remark
<div style="display: flex; justify-content: space-between;"> <div style="text-align: center;"> <p>machine Subassembly</p> </div> <div style="text-align: center;"> <p>ME-712</p> </div> </div>				
Sign	Qty	File NO.	Signature	Date
Design			Auditing	
Norm			Approve	

Edition	VIEW	Qty	SCALE
1.0		1	
Current 1 sheet		Total 2 sheet	
Ningbo Merol Coffee Machines Co., Ltd.			

ME-712-00101

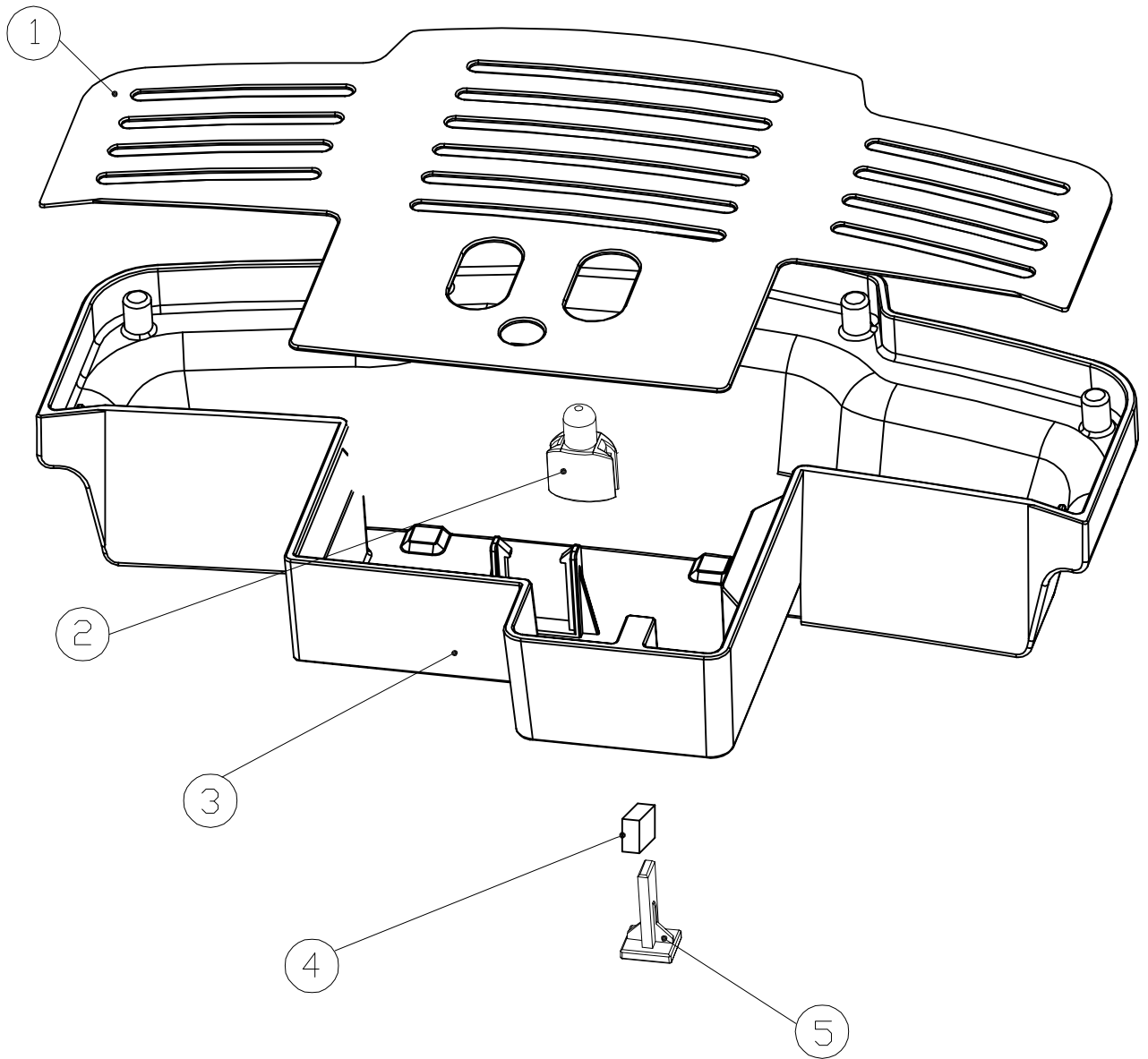


Control Panel cordsets
ME-712-4P016

36	coffee adapter	ME-712-10816	PA66 A3EG6		
35	pipe		L=90 Silicone		
34	Ties		L=100 Silicone		
33	pipe		L=210 Silicone		
32	Spring	ME-707-22102	SUS304	1	
31	Steam clamp	ME-707-21307	SUS304	1	
30	Teflon tube		Teflon L=260	1	
29	O-RING	ME-707-30904	High tear Silicone	1	
28	Screw		#JTP 3*12 SUS	3	
27	Steam connector	ME-712-10109	PA66 A3EG6	1	
26	O-RING	ME-707-31204	silicone	1	
25	O-RING	ME-707-30905	silicone	1	
24	steam tube	ME-712-20101	H62	1	
23	steam tube handle	ME-707-11004	PP HP730	1	
22	steam tube holder	ME-712-10110	PC IR2200	1	
21	Nozzle O-ring	ME-707-31002	silicone	1	
20	steam nozzle	ME-708-10119	PA66+GF30%	1	
19	milk pipe	ME-708-30101	∅3X∅6	1	
18	Milk foam device knob	ME-708-10118	PC N-IR2200	1	
17	Milk foam device	ME-708-30101	silicone	1	
16	Milk foam nozzle	ME-708-10120	PP HP730	1	
15	steam sleeve	ME-708-20106	H62	1	
14	screw		#BTP 3X8 SUS	2	
13	spout cover	ME-712-10107	ABS PA777E	1	
12	spout bracket	ME-712-10111	ABS PA757	1	
11	moving shrapnel	ME-708-20201		2	
10	hot water pan	ME-712-10106	ABS PA777E	1	
9	coffee pan	ME-712-10105	ABS PA777E	1	
8	coffee spout	ME-712-10104	ABS PA757	1	
7	brand name plate	ME-712-10108	ABS PA757	1	
6	LCD screen cover	ME-712-10102	ABS + PC	1	
5	LCD screen unit	ME-712-4D001		1	
4	LCD screen back cover	ME-712-10103	ABS PA757	1	
3	Front panel	ME-712-10101	ABS	1	
2	screw		#JTP 3X12 SUS	3	
1	control panel cords	ME-712-4P016		1	
NO.	NAME	Dwg NO.	Material & Specification	Qty	Remark

					front panel assembly		ME-712-00101		
					Edi tion	VIEW	Qty	SCALE	
					1.0		1		
					Current 1 sheet		Total 1 sheet		
					Ningbo Merol Coffee Machines Co., Ltd.				
Sign	Qty	File NO.	Signature	Date	Auditing				
Design					Approve				
Norm									

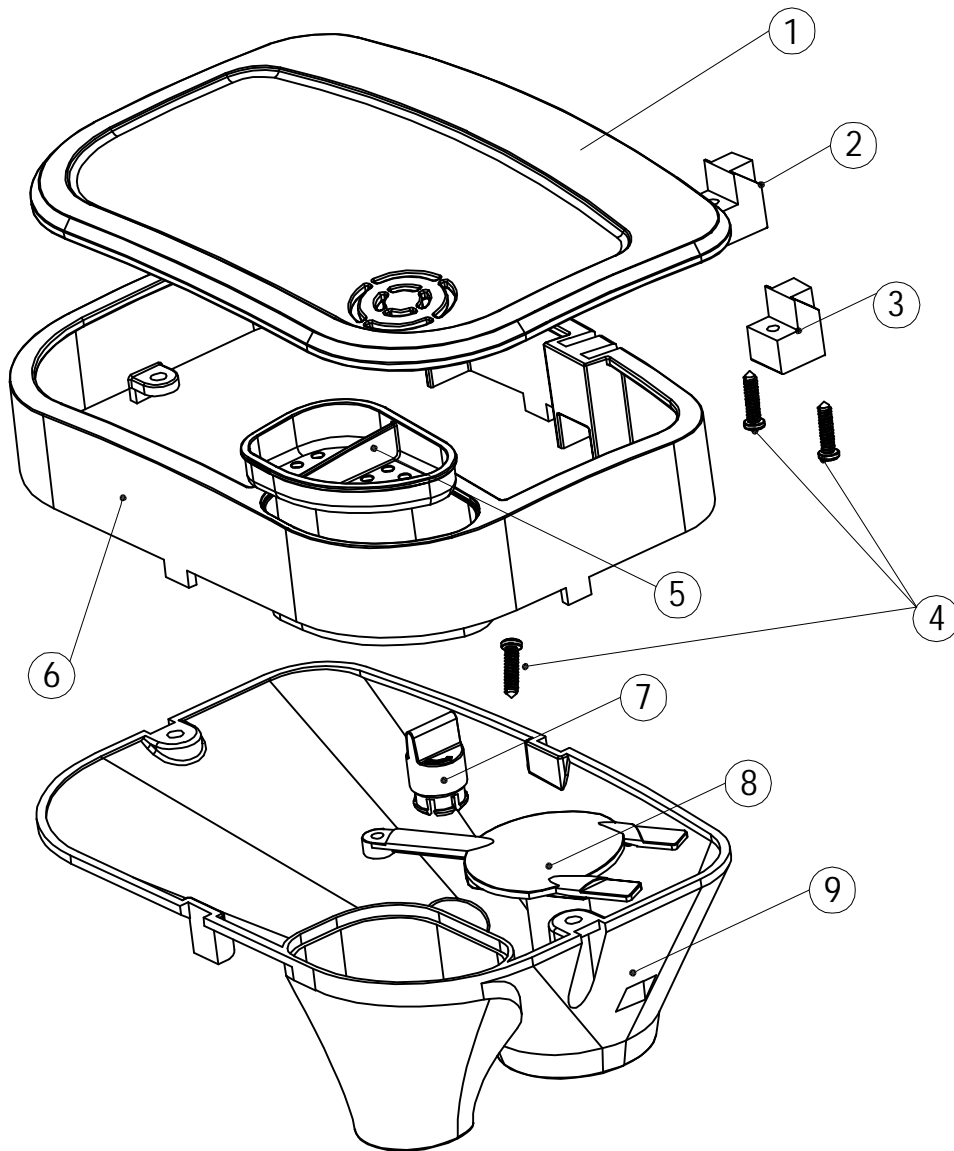
ME-712-00200



5	magnet holder	ME-712-10203	PP HJ730	1	
4	magnet	ME-707-20502	N40 NI	1	
3	drip pan	ME-712-10201	ABS PA777E	1	
2	float	ME-712-10202	PP HJ730	1	
1	drip tray	ME-712-20201	SUS 301	1	
NO.	NAME	Dwg NO.	Material & Specification	Qty	Remark

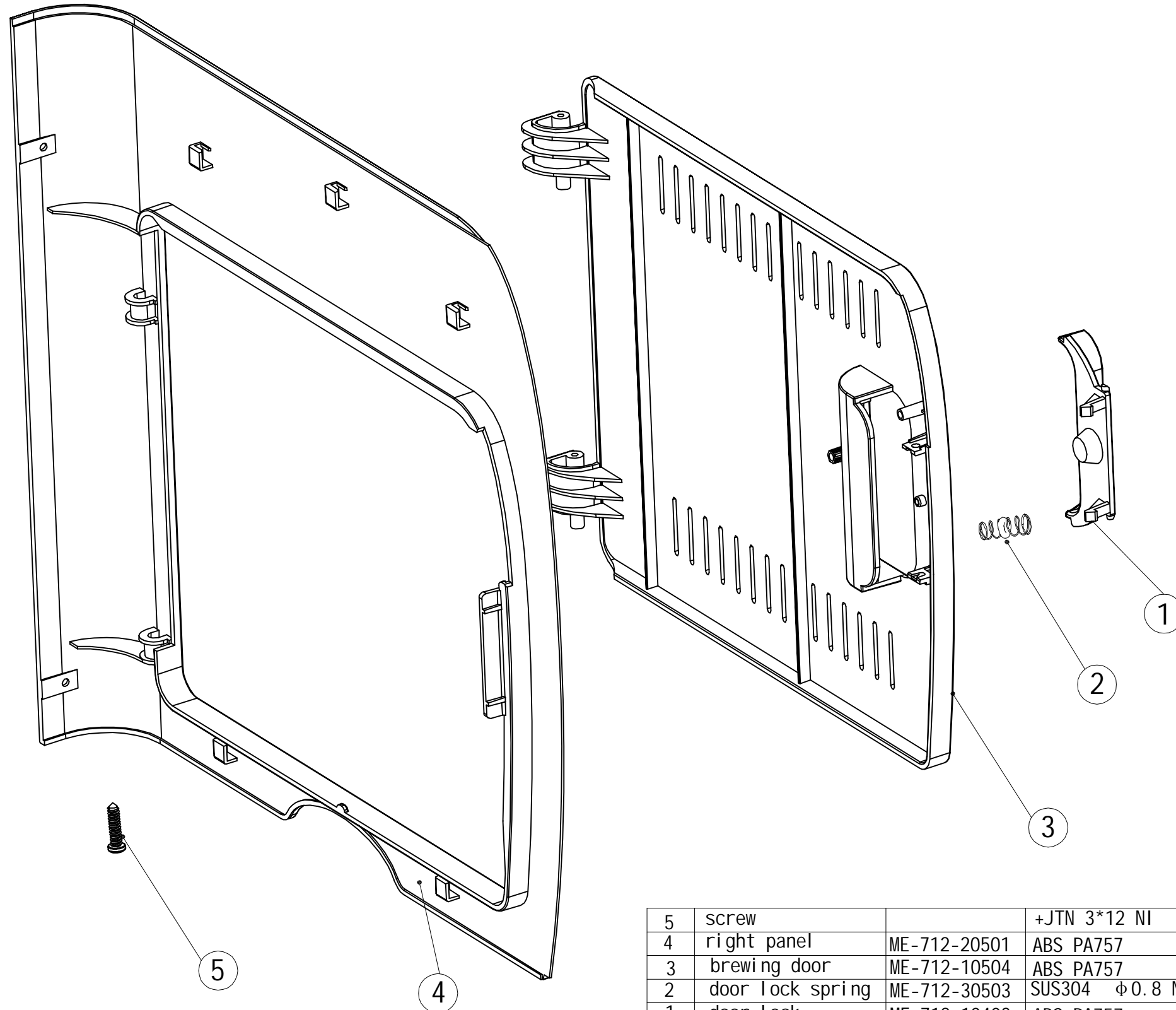
					Drip tray Subassembly		ME-712-00200			
							Edition	VIEW	Qty	SCALE
Sign	Qty	File NO.	Signature	Date	1.0		1			
Design					Auditing					
Norm					Approve					
						Current 1 sheet Total 1 sheet				
						Ningbo Merol Coffee Machines Co., Ltd.				

ME-712-00300



9	bean tank bottom	ME-712-10301	ABS PA777E	1	
8	bean grinding cover	ME-712-10308	ABS PA757	1	
7	adjustment knob	ME-712-10307	ABS PA757	1	
6	bean tank body	ME-712-10302	PC IR2200 (transparence)	1	
5	powder lid	ME-712-10306	PC IR2200 (transparence)	1	
4	Screw		SUS 3*12	3	
3	right lid-fixed block	ME-712-10305	PC IR2200 (transparence)	1	
2	left lid-fixed block	ME-712-10304	PC IR2200 (transparence)	1	
1	bean tank lid	ME-712-10303	ABS PA757	1	
NO.	NAME	Dwg NO.	Material & Specification	Qty	Remark

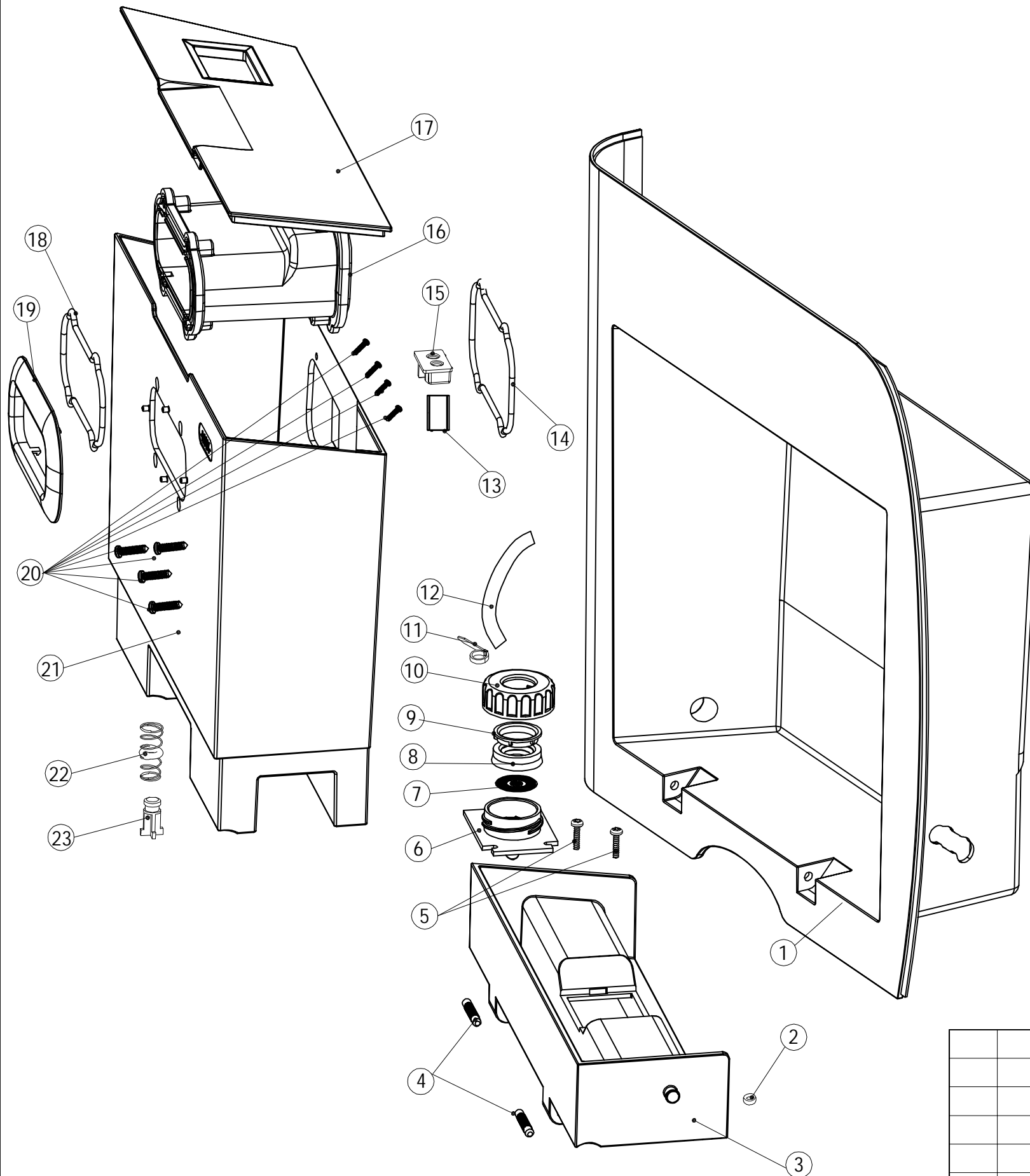
					Bean house Subassembly		ME-712-00300		
							Edi tion	VIEW	Qty
Sign	Qty	File NO.	Signature	Date	1.0		1		
Design					Audi ting				
Norm					Approve				
					Current 1 sheet Total 1 sheet				
					Ningbo Merol Coffee Machines Co., Ltd.				



5	screw		+JTN 3*12 NI	1	
4	right panel	ME-712-20501	ABS PA757	1	
3	brewing door	ME-712-10504	ABS PA757	1	
2	door lock spring	ME-712-30503	SUS304 φ0.8 N:9 L:17.5	1	
1	door lock	ME-712-10403	ABS PA757	1	
NO.	NAME	Dwg NO.	Material & Specification	Qty	Remark

					right panel Subassembly		ME-712-00400			
							Edition	VIEW	Qty	SCALE
							1.0		1	
Sign	Qty	File NO.	Signature	Date			Current 1 sheet Total 1 sheet			
Design					Auditing					
Norm					Approve					
							Ningbo Merol Coffee Machines Co., Ltd.			

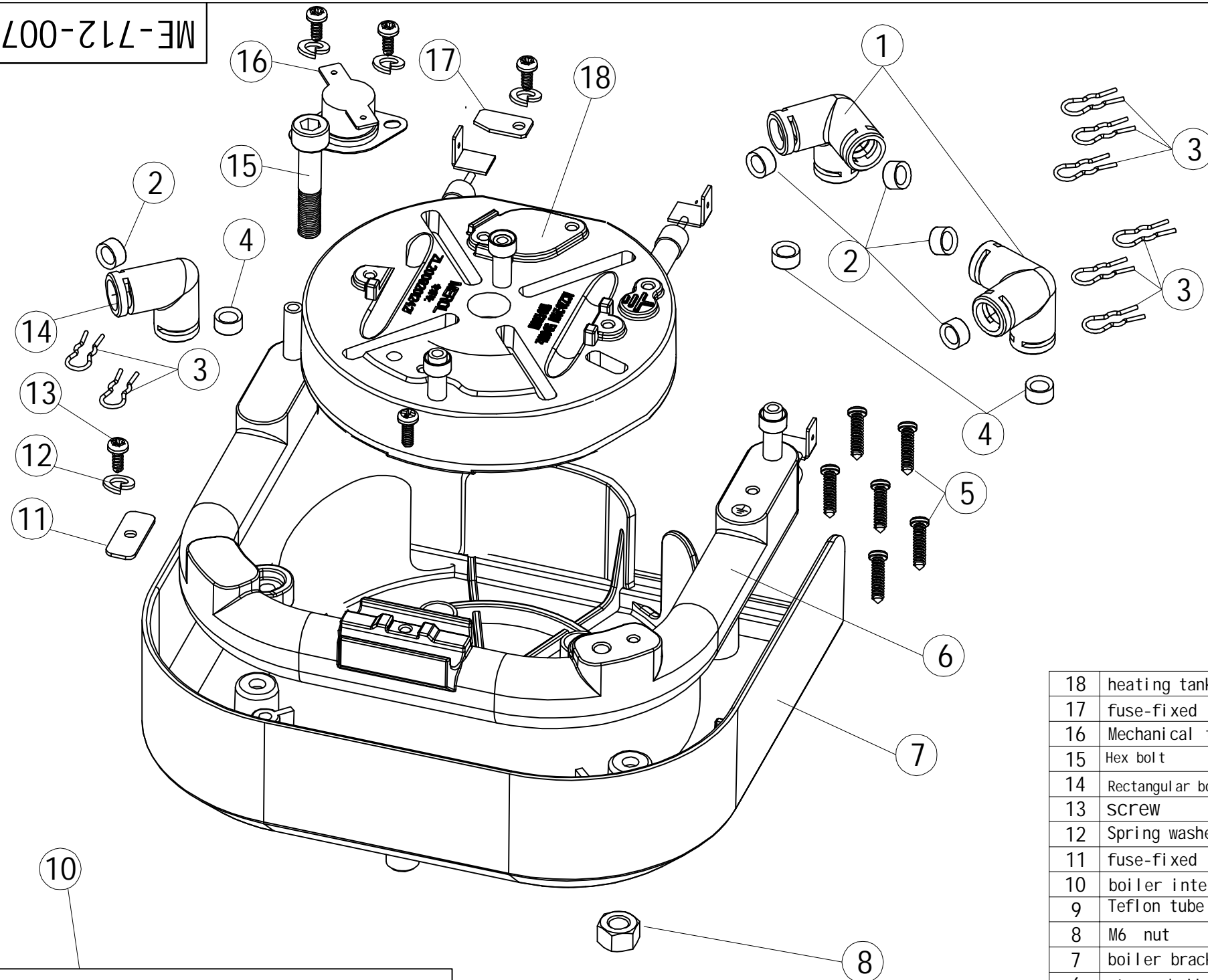
ME-712-00500



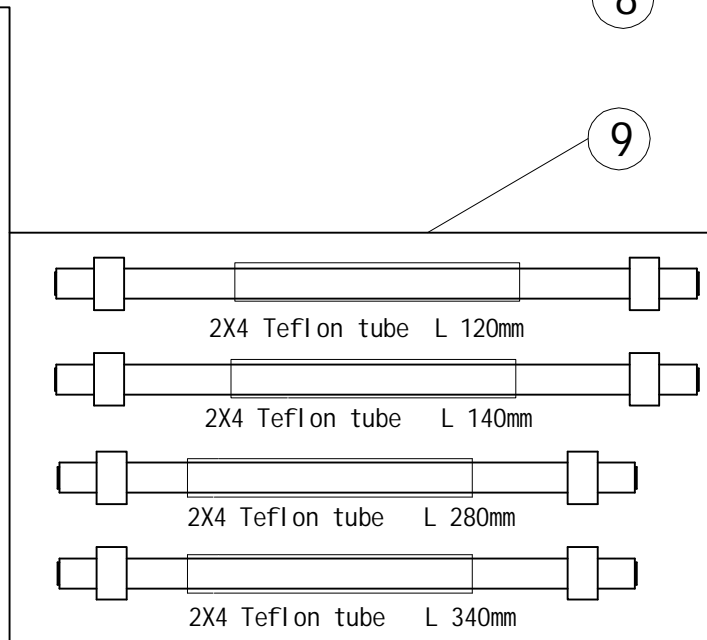
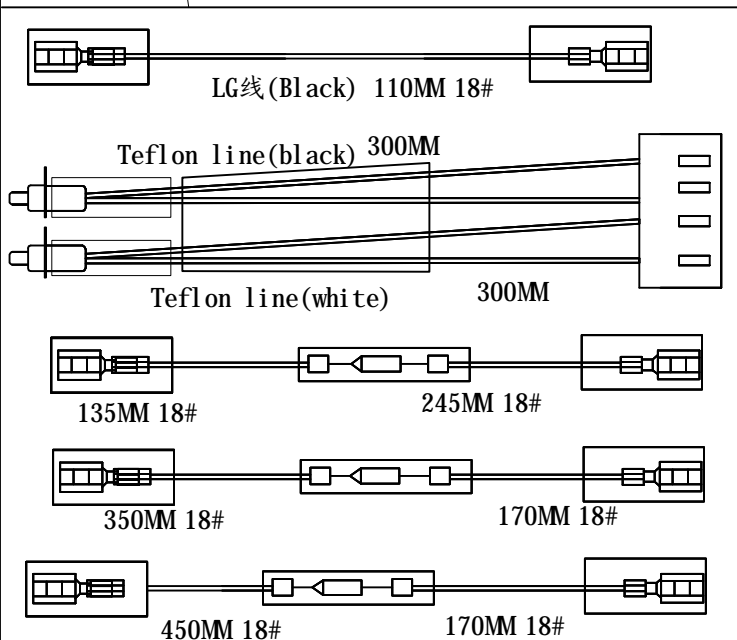
23	water tank valve	ME-707-10507	ABS PA757	1	
22	water tank spring	ME-707-20501	SUS304	1	
21	water tank	ME-712-10501	PC IR2200 transpare	1	
20	screw		3X12	8	
19	handle cover	ME-712-10505	ABS PA757	1	
18	handle o-ring	ME-712-30501	silicon	1	
17	water tank lid	ME-712-10506	PC IR2200 transpare	1	
16	water tank handle	ME-712-10502	PC IR2200 transpare	1	
15	float holder	ME-712-10503	PC IR2200	1	
14	handle o-ring	ME-712-30502	silicon	1	
13	water tank float	ME-707-10503	PP HJ730	1	
12	silicone tube		L=170 5*9	1	
11	Ties		L=100	1	
10	outlet lid	ME-712-10602	ABS PA757	1	
9	filter ring	ME-712-10603	PP HP730	1	
8	U ring	ME-707-30601	silicon	1	
7	water outlet filter	ME-712-20601	SUS301	1	
6	water outlet bracket	ME-712-10601	ABS PA757	1	
5	screw		#BTP 3X12 SUS	2	
4	water tank shaft	ME-712-20501	steel	2	
3	water tank bottom	ME-712-10504	ABS PA757	1	
2	Teflon tube	ME-712-30503	Teflon L=3.5	1	
1	Left panel	ME-712-10802	ABS PA757	1	
NO.	NAME	Dwg NO.	Material & Specification	Qty	Remark

					Left panel Subassembly		ME-712-00500		
					Edi tion	VIEW	Qty	SCALE	
					1.0		1		
					Current 1 sheet		Total 1 sheet		
					Ningbo Merol Coffee Machines Co., Ltd.				
Sign	Qty	File NO.	Signature	Date	Auditing				
Design					Approve				
Norm									

ME-712-00700

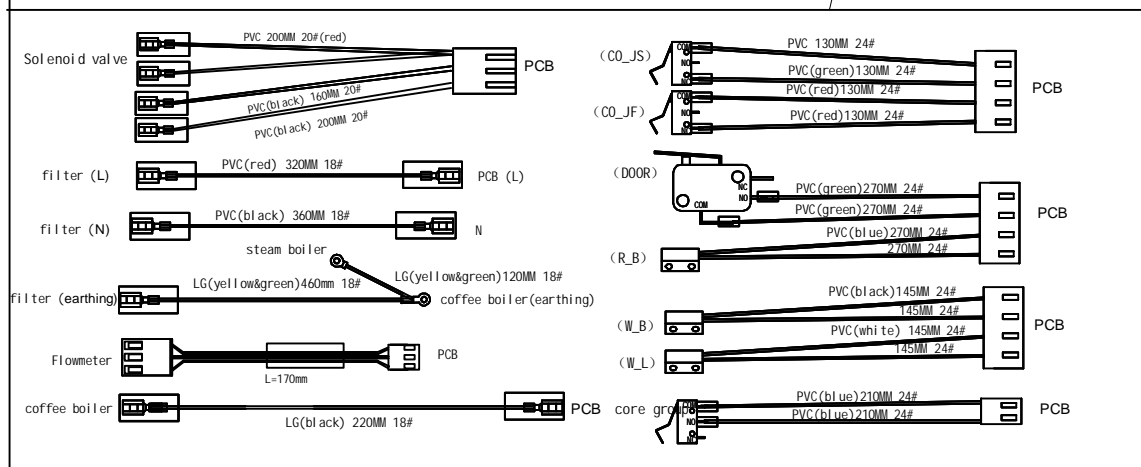
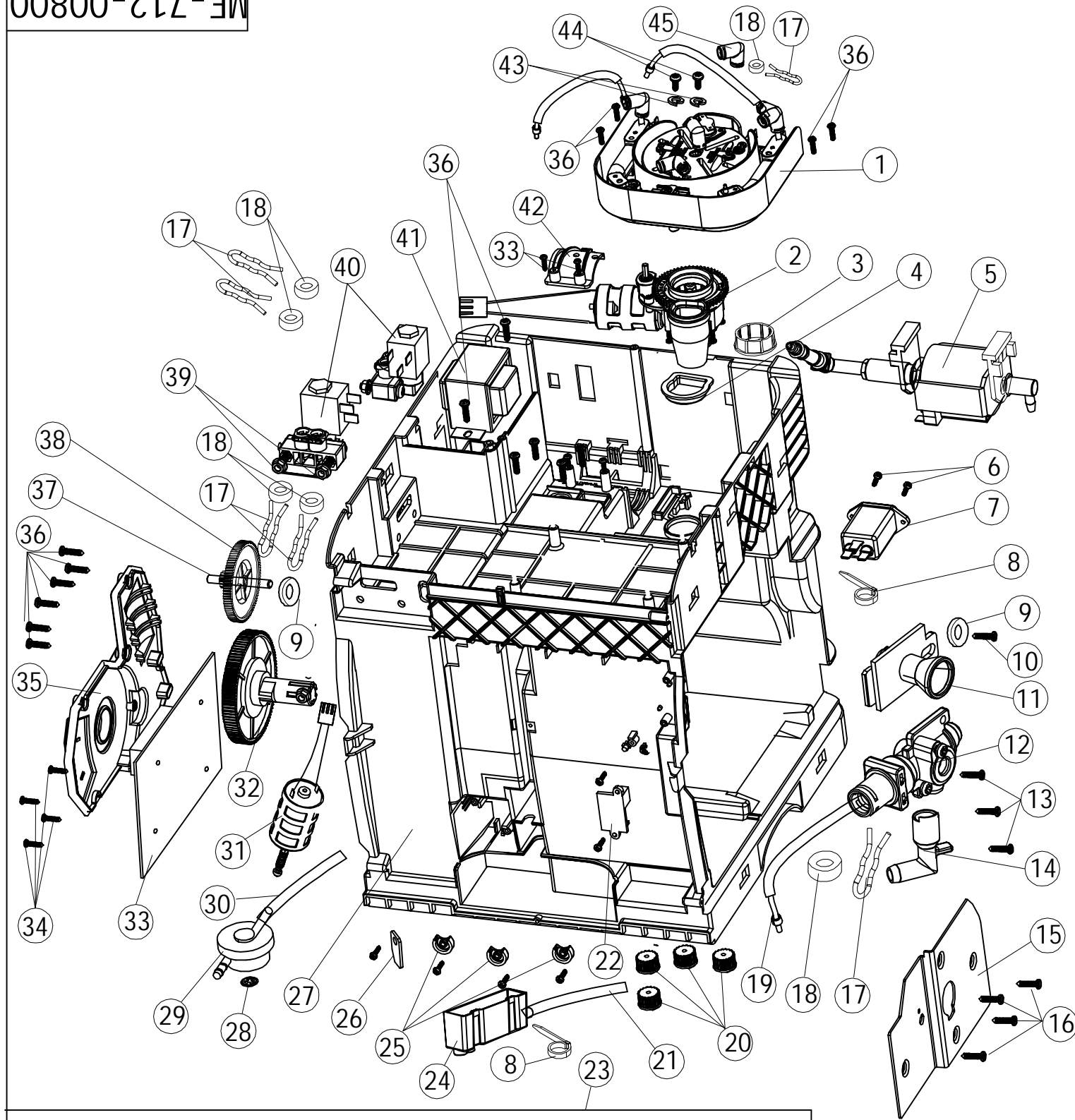


18	heating tank	ME-712-20701	230V 1200W	1	
17	fuse-fixed tablet	ME-707-21707	SUS430 T1.0	1	
16	Mechanical thermostat		158°C	1	
15	Hex bolt		ISO P M6*30	1	
14	Rectangular boiler fittings	ME-708-21705	H59	1	
13	screw		+BTP 3*8 NI	4	
12	Spring washer 3.0		65Mn φ3.0	4	
11	fuse-fixed tablet	ME-712-20705	SUS 430 T=1.0	1	
10	boiler inter wires	ME-712-4P100		1	
9	Teflon tube	ME-712-30804	Teflon	1	
8	M6 nut		GB/T41-2000-M6	1	
7	boiler bracket	ME-712-10701	PA66	1	
6	steam boiler	ME-712-20702	230V 1200W	1	
5	screw		+BTP 4*16 NI	2	
4	water tube seal for boiler	ME-707-30905	High tear Silicone	3	
3	pipe clamp		SUS304	8	
2	O-ring	ME-707-30904	Silicone	5	
1	Three joints	ME-708-21706	H59	1	
NO.	NAME	Dwg NO.	Material & Specification	Qty	Remark



Heating Systems Subassembly					ME-712-00700			
					Edition	VIEW	Qty	SCALE
Sign Qty File NO. Signature Date					1.0		1	
Design					Auditing		Current 1 sheet Total 1 sheet	
Norm					Approve		Ningbo Merol Coffee Machines Co., Ltd.	

ME-712-00800



45	Rectangular boiler fittings	ME-712-20704	H59	1	
44	screw		+BTP 3*8 NI	2	
43	Spring washer 3.0		65Mn φ3.0	2	
42	motor-fixed cover	ME-712-10811	PA66 A3EG6	1	
41	Transformers		DCG-2400700A	1	
40	solenoid valve unit	ME-712-00900	DC24V	2	
39	Hex Nuts		ISOZ M5	4	
38	Transmission skew gear	ME-712-10805	POM 100P NC010	1	
37	shaft	ME-707-21101	ME-707-21101	1	
36	screw		+JTP 4*16 NI	12	
35	Transmission shaft	ME-712-10804	PA66 A3EG6	1	
34	screw		+JTP3*12	6	
33	control PCB	ME-712-4D002	1.6 THICK	1	
32	Transmission gear	ME-707-11102	POM F20-03	1	
31	transmission motor unit	ME-712-00801		1	
30	silicon tube		5*9 L=210mm	1	
29	Flowmeter			1	
28	snap spring		φ8Xφ2.6X0.3	1	
27	Machine bracket	ME-712-10801	ABS PA757	1	
26	fuse-fixed tablet	ME-707-21707	SUS430 T1.0	1	
25	filter upper couplings	ME-707-11222	POM 500P	3	
24	Drip tray	ME-712-10806	PP HJ730	1	
23	inter wires	ME-712-4P100		1	
22	switch cover	ME-707-11409	ABS PA757	1	
21	silicon tube		5*9 L=90mm	1	
20	foot rubber	ME-707-31401	silicon	4	
19	Teflon tube	ME-712-30804	2*4 L=385mm Teflon	1	
18	O-ring	ME-707-30904	High tear Silicone	7	
17	steam clamp			7	
16	screw		+BTP4*14SUS	4	
15	fixed plate	ME-712-20801	SPCC 1.5mm 镀三价铬	1	
14	drip tray coupling	ME-712-10819	PP	1	
13	screw		#JTP sus 3*12NI	9	
12	water inlet valve unit	ME-707-01300		1	
11	coffee connector	ME-712-10808	PA66 A3EG6	1	
10	screw		3*12	1	
9	washer		steel 4.2X8XT0.5	2	
8	tei		2.5X100	6	
7	filter		FN 9222-15-06 AC250/10A 50HZ	1	
6	screw		3X12	2	
5	pump unit	ME-712-00802		1	
4	powder flow sleeve	ME-712-30904	silicon	1	
3	grinder motor rubber	ME-712-30907	silicon	1	
2	grinder motor unit	ME-712-00900		1	
1	heating unit	ME-712-00700		1	
NO.	NAME	Dwg NO.	Material & Specification	Qty	Remark

machine bracket
Subassembly

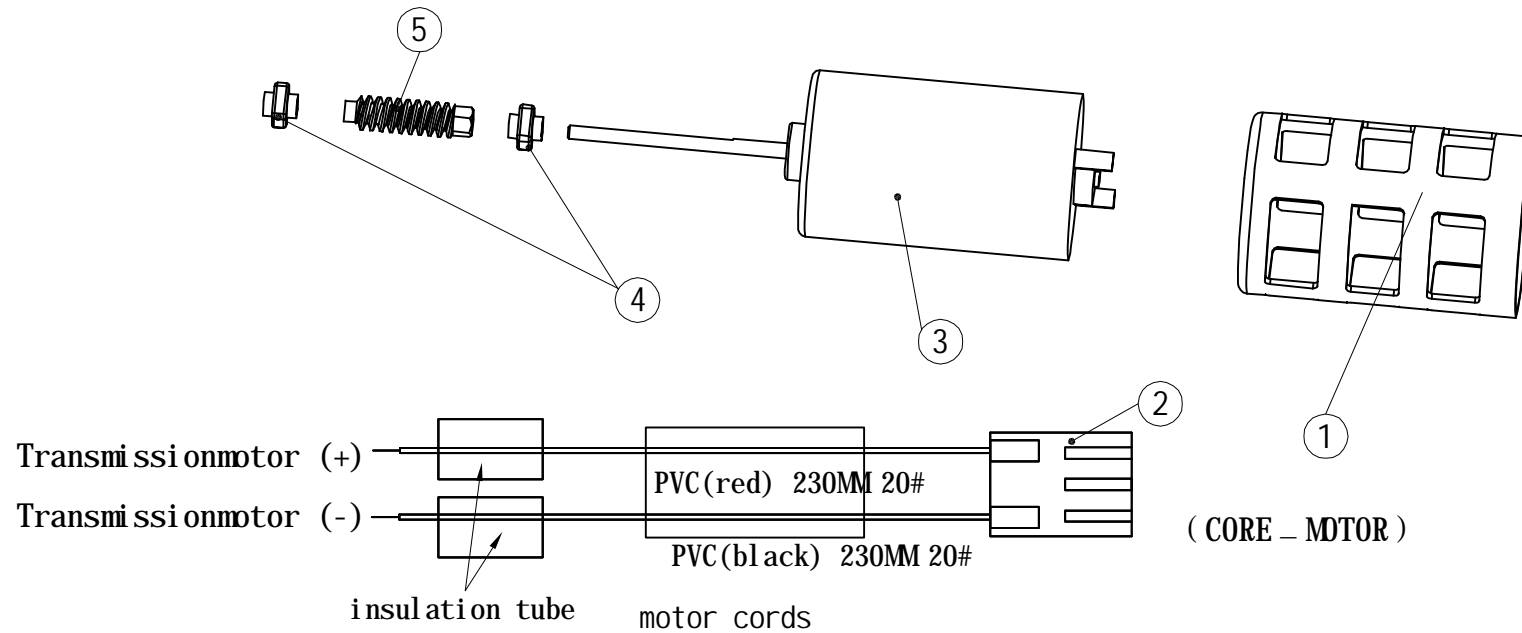
ME-712-00800

Edi tion	VIEW	Qty	SCALE
1.0		1	
Current 1 sheet		Total 2 sheet	
Ningbo Merol Coffee Machines Co., Ltd.			

Sign	Qty	File NO.	Signature	Date
Design				
Norm				

Audi ting
Approve

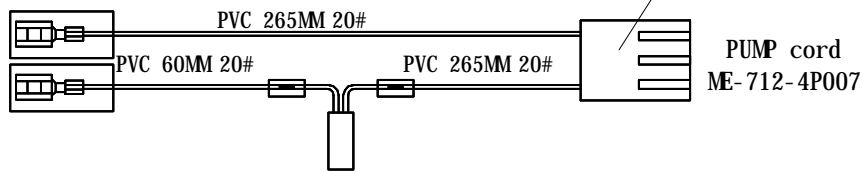
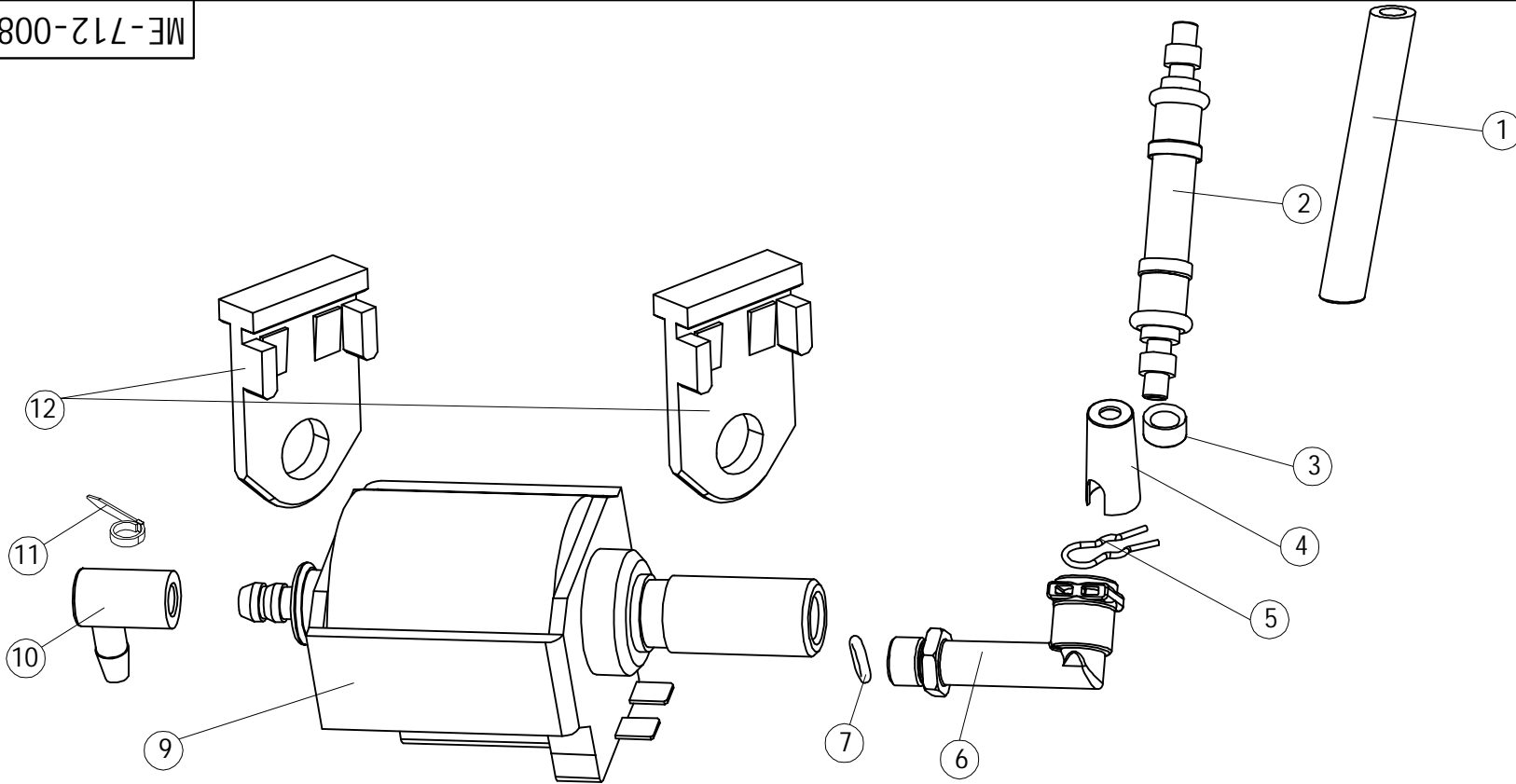
ME-712-00801



5	worm	ME-712-10817	PA66	1	
4	motor shaft sleeve	ME-712-20803	Fe	2	
3	motor	ME-712-40801	HRS-555SM-23100-D	1	
2	motor cords	ME-712-4P100	L=230mm	1	
1	motor sleeve	ME-707-31101	silicon	1	
NO.	NAME	Dwg NO.	Material & Specification	Qty	Remark

					Transmission Suassembly		ME-712-00801	
							Edi tion	VIEW
					1.0		1	
Sign	Qty	File NO.	Signature	Date	Current 1 sheet		Total 1 sheet	
Design					Audi ting			
Norm					Approve			
							Ningbo Merol Coffee Machines Co., Ltd.	

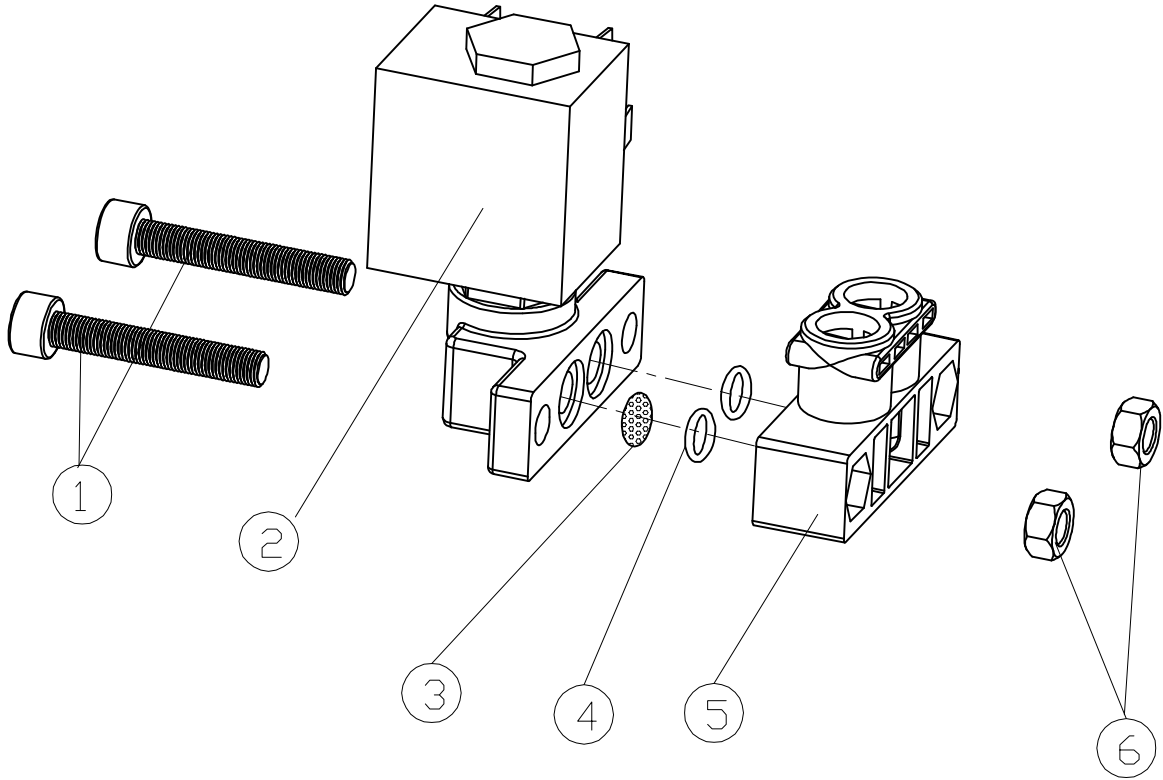
ME-712-00802



12	support bracket	ME-712-30801	rubber	2	
11	ties		2.5X100	1	
10	pump fitting	ME-712-30802	GB/T41-2000-M6	1	
9	PUMP	ME-707-41802	Invensys EP4 230V/50HZ/70W	1	
8	pump cords	ME-712-4P007		1	
7	O-ring	ME-707-31204	High tear Silicone	1	∅5.6X∅1.8
6	pump fittings	ME-712-10813	PA66 A3EG6	1	
5	steam clamp		SUS304	1	
4	Pump waterproof O-ring	ME-712-30908	rubber	1	
3	O-ring	ME-707-30904	High tear Silicone	1	
2	PUMP hose	ME-712-20802	Stainless steel braided silicone hose	1	
1	Silicone tube		12*16 L=200mm	1	
NO.	NAME	Dwg NO.	Material&Specification	Qty	Remark

					Pump Subassembly		ME-712-00802	
					Edi tion	VIEW	Qty	SCALE
					1.0		1	
Sign	Qty	File NO.	Signature	Date			Current 1 sheet Total 1 sheet	
Design					Auditing			
Norm					Approve			
					Ningbo Merol Coffee Machines Co., Ltd.			

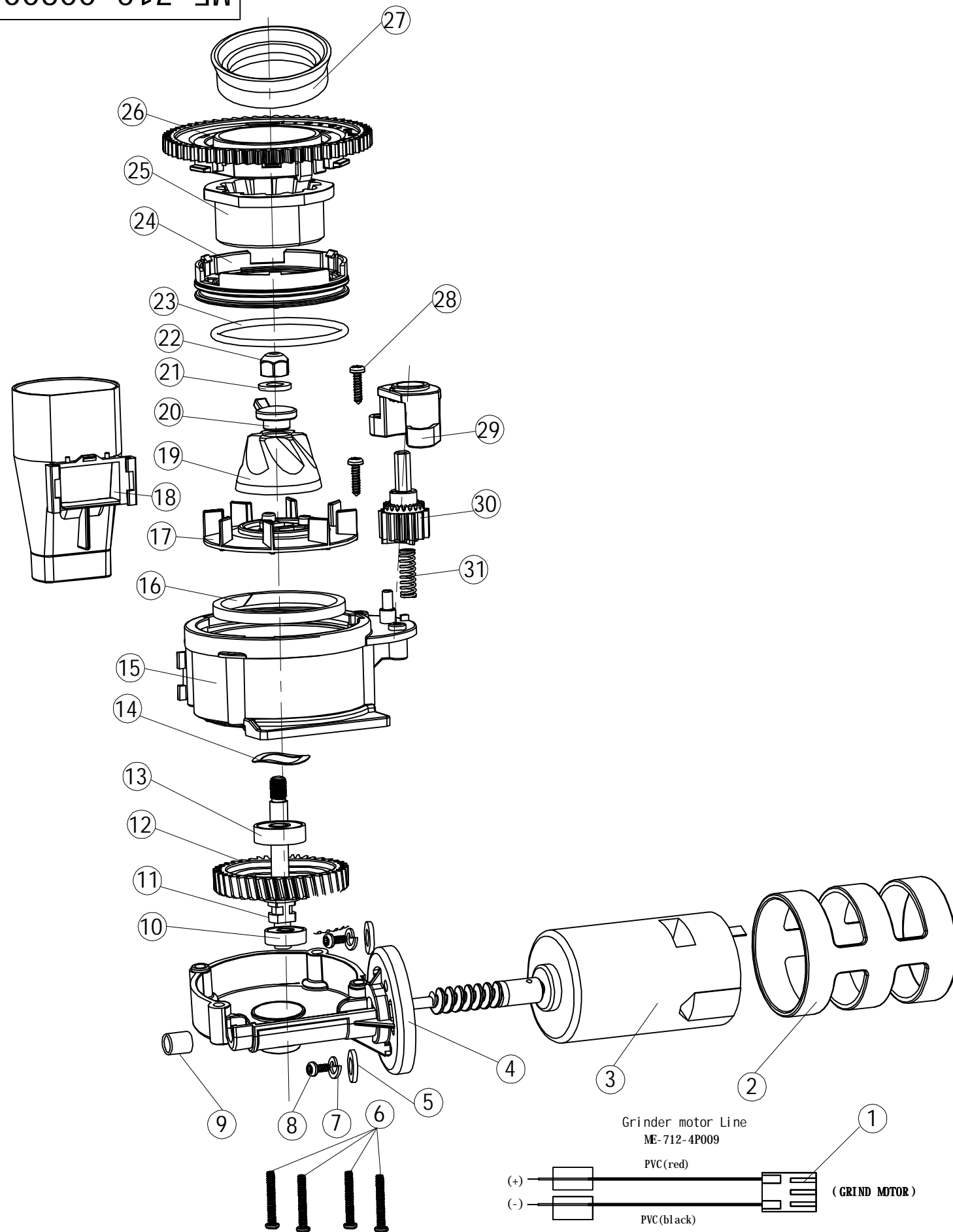
ME-712-00803



6	Hex Nuts		ISOZ M5	2	
5	solenoid valve connector	ME-709-10117	PA66	1	
4	Coffee spout tube O-ring	ME-707-31204	High tear Silicone	2	∅5.6X∅1.8
3	filter	ME-709-20101	SUS304	1	
2	solenoid valve		JYZ-3E501-G 24VDC P=0.02-2	1	
1	hex nut		ISOP M5X35 ZI	2	

NO.	NAME	Dwg NO.	Material & Specification	Qty	Remark			
<h2>Solenoid valve Subassembly</h2>			<h1>ME-712-00803</h1>					
			Edi tion	VIEW	Qty	SCALE		
Sign	Qty	File NO.	Signature	Date	1.0		1	
Design			Audi ting			Current 1 sheet	Total 1 sheet	
Norm			Approve			Ningbo Merol Coffee Machines Co., Ltd.		

ME-712-00900



31	spring	ME-707-20801	SUS304 Φ0.8 N:9 L:17.5	1	
30	gear	ME-712-10908	PC	1	
29	gear cover	ME-712-10909	PC	1	
28	screw		3*12 Blue	2	
27	o-ring	ME-712-30901	Silicon	1	
26	outer wheel bracket	ME-707-11510	ABS PA757	1	
25	outer wheel for grinder	ME-712-10906	9Cr18Mo	1	
24	outer wheel cover	ME-712-10905	ABS PA757	1	
23	o-ring	ME-712-30906	Silicon	1	
22	screw		GB923-88 M6 Left	1	
21	washer		steel Φ6.0 (ID)	1	
20	bean rabble	ME-712-10910	PA66 A3EG6	1	
19	inner wheel for grinder	ME-707-21505	9Cr18Mo	1	
18	powder inlet	ME-712-10907	ABS PA757	1	
17	powder turntable	ME-712-10903	PA66 A3EG6	1	
16	felt	ME-712-30905	Felt	1	
15	grinder bracket	ME-712-10902	PA66 A3EG6	1	
14	Wave spring		JB/T 7590 D22	1	
13	bearing		∅10*∅22	1	
12	Grinder gear	ME-712-10904	PA66 A3EG6	1	
11	shaft	ME-712-20902	45#	1	
10	bearing		∅6*∅19	1	
9	needle roller bearing		HK0408	1	
8	screw		+ISO M4*10 NI	2	
7	snap spring		65Mn Φ4.0 (ID)	2	
6	screw		+BTP 4*28	4	
5	washer		ID∅4*OD∅8*0.5	2	
4	Grinder Bottom	ME-712-10901	PA66 A3EG6	1	
3	Grinder motor	ME-712-40901	HRS -7712PM-12170-C212 -FW 230VDC	1	
2	motor sleeve	ME-712-30902	Silicon	1	
1	grinder motor cords	ME-712-4P009	L=295MM	1	
NO.	NAME	Dwg NO.	Material & Specification	Qty	Remark

Grinder Subassembly

ME-712-00900

Edi tion VIEW Qty SCALE

1.0



1

SCALE

Sign Qty File NO. Signature Date

Design

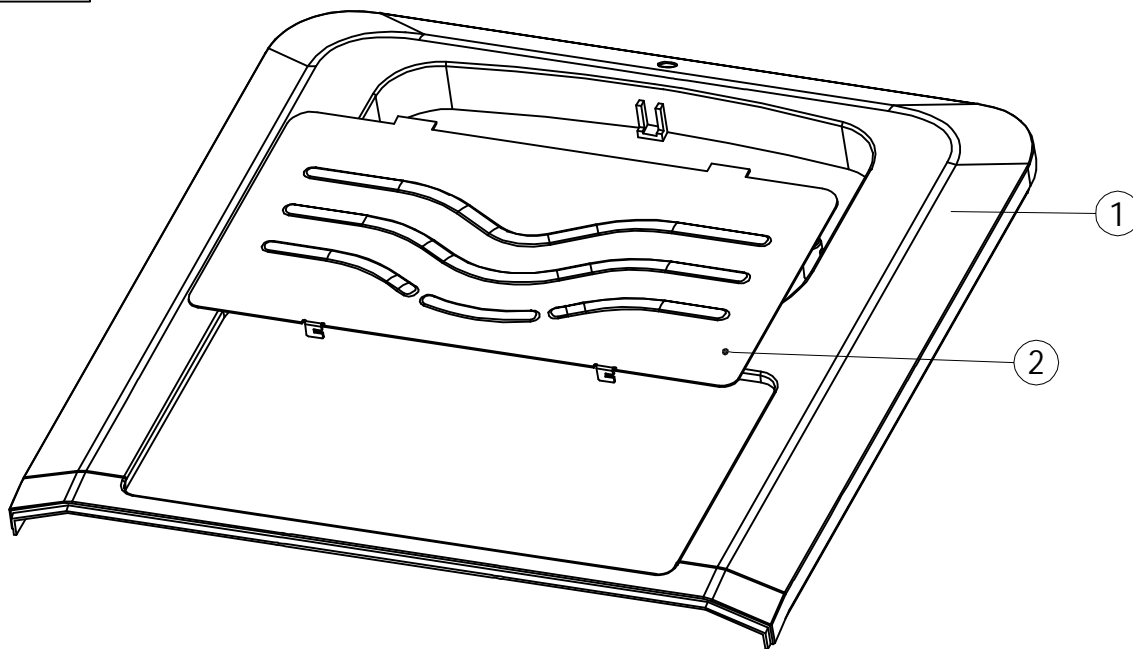
Norm

Audi ting

Approve

Current 1 sheet Total 1 sheet
Ningbo Merol Coffee Machines
Co., Ltd.

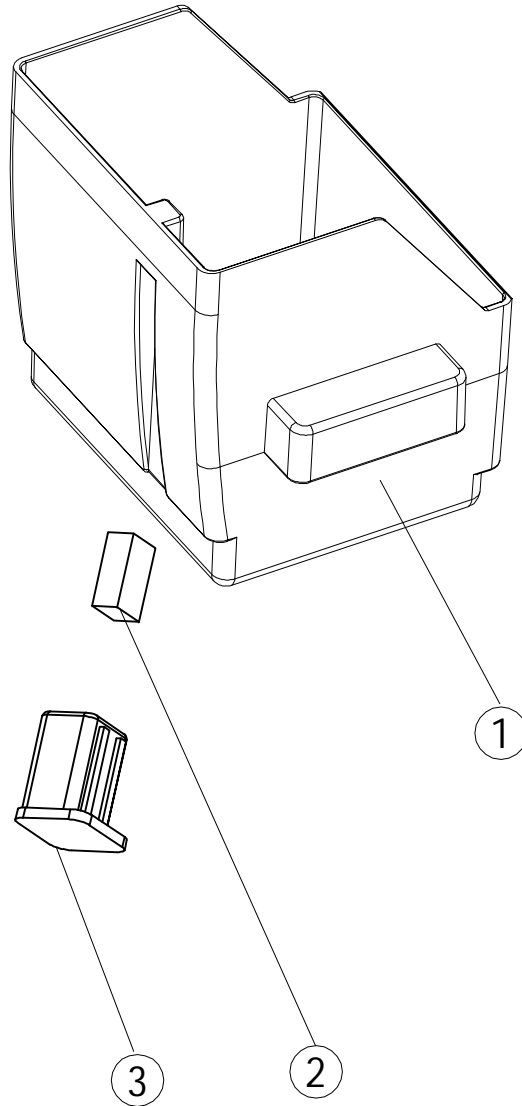
ME-712-01000



2	warm cup panel	ME-712-21001	SUS301	1	
1	Top cover	ME-712-11001	ABS + PC	1	
NO.	NAME	Dwg NO.	Material & Specification	Qty	Remark

					TOP COVER Subassembly		ME-712-01000			
							Edi tion	VIEW	Qty	SCALE
							1.0		1	
Sign	Qty	File NO.	Signature	Date			Current 1 sheet		Total 1 sheet	
Design					Audi ting					
Norm					Approve					
							Ningbo Merol Coffee Machines Co., Ltd.			

ME-712-01100



3	magnet holder	ME-707-11408	PP HJ730	1	
2	magnet of water tank	ME-707-20502	Neodymium iron, boron	1	
1	dregs box	ME-712-10807	ABS PA757	1	
NO.	NAME	Dwg NO.	Material & Specification	Qty	Remark

					Bean dregs Box Subassembly		ME-712-01100			
							Edition	VIEW	Qty	SCALE
							1.0		1	1:1
Sign	Qty	File NO.	Signature	Date			Current 1 sheet		Total 1 sheet	
Design					Auditing					
Norm					Approve					
							Ningbo Merol Coffee Machines Co., Ltd.			