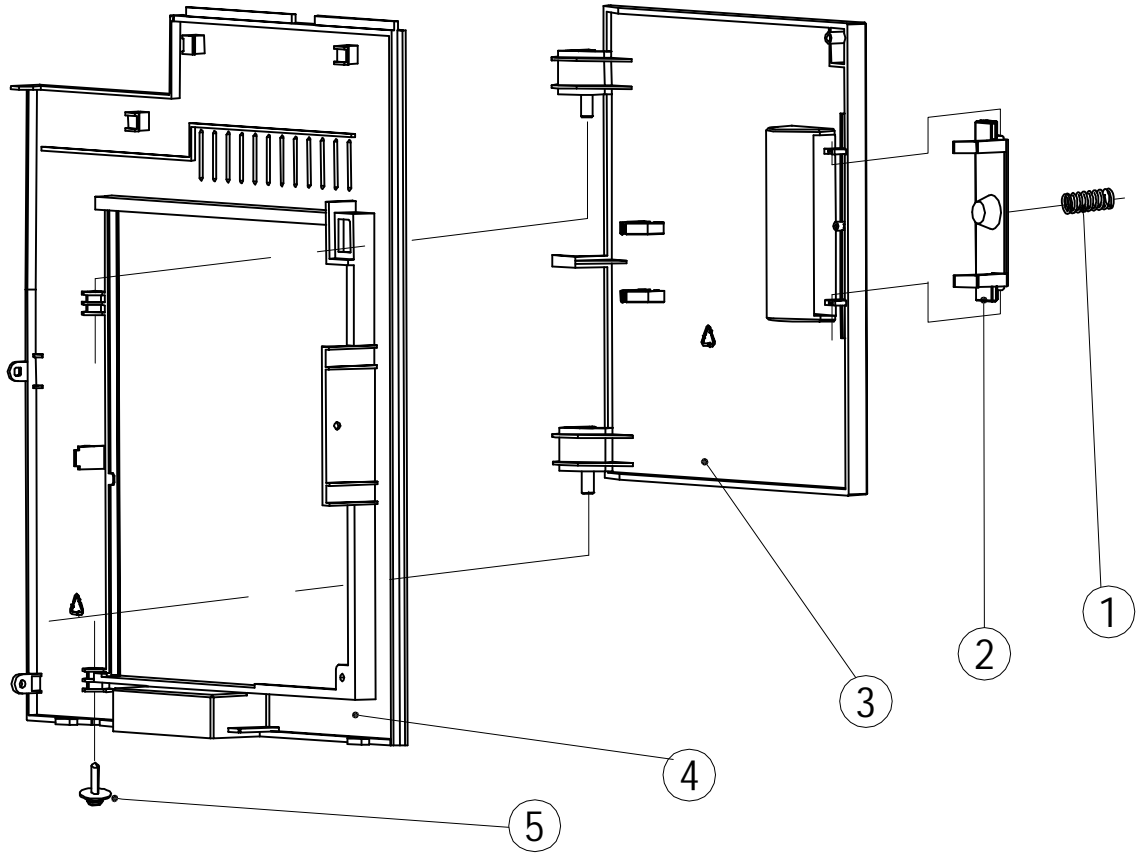
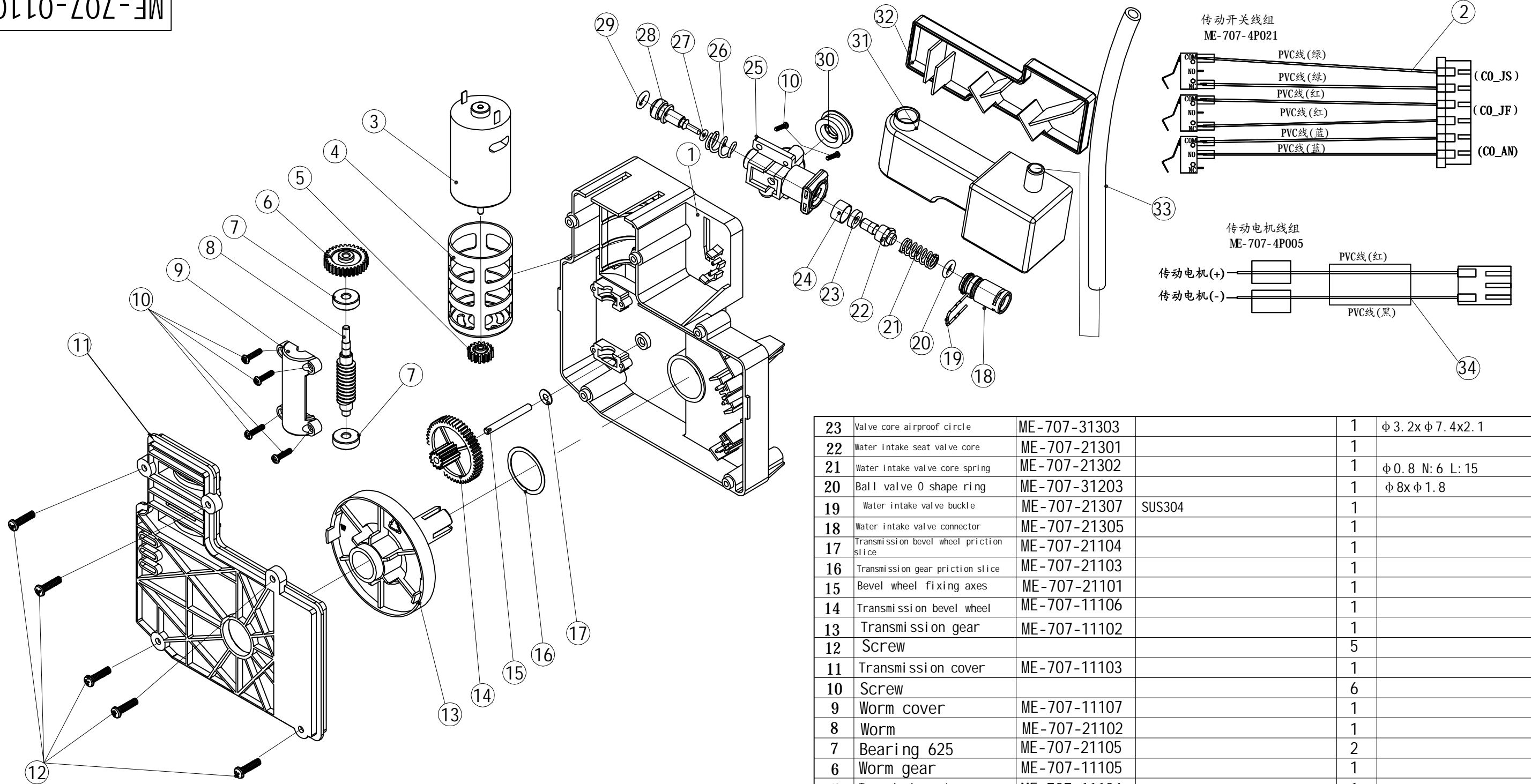


ME-707-00800



5	SCREW			1	∅3X12
4	Right panel	ME-707-10103		1	
3	Brewage door	ME-707-10801		1	
2	Door button	ME-707-10802		1	
1	Door button spring	ME-707-20801		1	∅0.8 N:9 L:17.5
NO.	NAME	Dwg NO.	Material & Specification	Qty	Remark

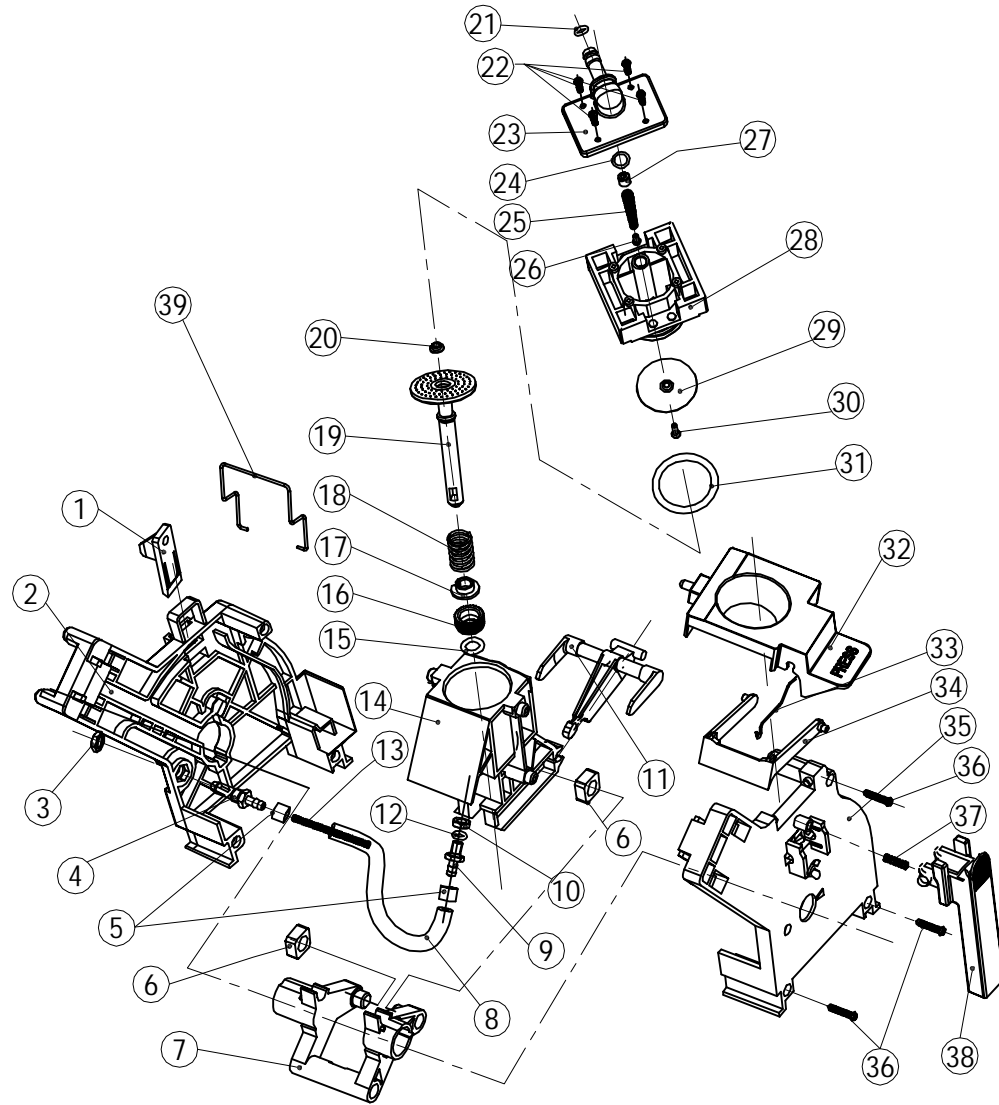
					Brewage_door suassembly		ME-707-00800			
							Edition	VIEW	Qty	SCALE
							1.0		1	1:1
Sign	Qty	File NO.	Signature	Date			Current 1 sheet		Total 1 sheet	
Design					Auditing					
Norm					Approve					
							Ningbo Merol Coffee Machines Co., Ltd.			



23	Valve core airproof circle	ME-707-31303		1	φ 3.2x φ 7.4x2.1
22	Water intake seat valve core	ME-707-21301		1	
21	Water intake valve core spring	ME-707-21302		1	φ 0.8 N: 6 L: 15
20	Ball valve 0 shape ring	ME-707-31203		1	φ 8x φ 1.8
19	Water intake valve buckle	ME-707-21307	SUS304	1	
18	Water intake valve connector	ME-707-21305		1	
17	Transmission bevel wheel priction slice	ME-707-21104		1	
16	Transmission gear priction slice	ME-707-21103		1	
15	Bevel wheel fixing axes	ME-707-21101		1	
14	Transmission bevel wheel	ME-707-11106		1	
13	Transmission gear	ME-707-11102		1	
12	Screw			5	
11	Transmission cover	ME-707-11103		1	
10	Screw			6	
9	Worm cover	ME-707-11107		1	
8	Worm	ME-707-21102		1	
7	Bearing 625	ME-707-21105		2	
6	Worm gear	ME-707-11105		1	
5	Transmission motor gear	ME-707-11104		1	
4	Transmission motor sheath	ME-707-31101		1	
3	Transmission Motor			1	24DC 0.25A
2	Transmission Switch Line	ME-707-4P021		1	
1	Transmission box	ME-707-11101		1	

34	Core motor Cordsets	ME-707-4P005		1	
33	Silicone tube	ME-707-32101	Silicone OD8.0-ID5.0	1	L=190
32	Waste water box cover	ME-707-11304	PP HJ730	1	
31	Waste water box	ME-707-11303	PP HJ730	1	
30	Core inlet valve seals	ME-707-31302	Dow Corning Silicone	1	5.5x12x5
29	Thimble 0-ring	ME-707-31301	Silicone	1	φ 4.4x φ 1.7
28	Water intake thimble	ME-707-21304	Brass H59	1	
27	Control valve 0-ring	ME-707-30903	High tear Silicone	1	φ 1.8x φ 1.8
26	Water intake valve spring	ME-707-21306	SUS304	1	φ 1.0 N: 2 L: 11
25	Brewing unit water intake seat	ME-707-11301	PA66 A3EG6	1	
24	Brass sheath for valve core	ME-707-21303		1	

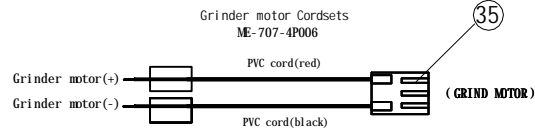
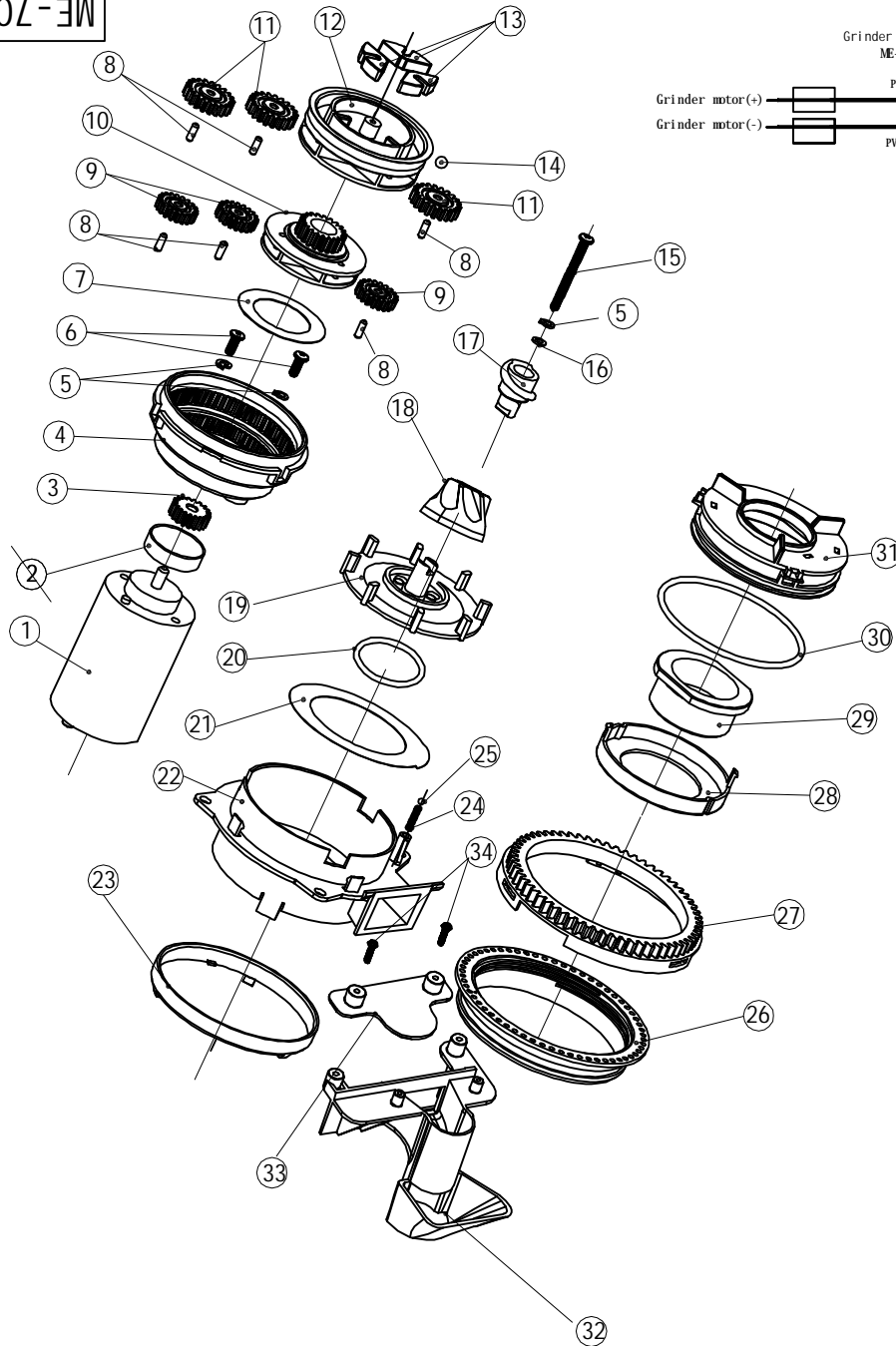
NO.	NAME	Dwg NO.	Material & Specification	Qty	Remark
<b>Transmission Suassembly</b>					
				<b>ME-707-01100</b>	
				Edi tion	VIEW
				1.0	⊕ ⊞
				Qty	SCALE
				1	1:1
				Current 1 sheet Total 1 sheet	
				Ningbo Merol Coffee Machines Co., Ltd.	
Sign	Qty	File NO.	Signature	Date	
Design					Audi ting
Norm					Approve



39	Powder torsion spring	ME-707-21217	SUS304 φ1.4	1	
38	Brewing unit handle	ME-707-11210		1	
37	Core handle spring	ME-707-21203		1	
36	Screw			3	
35	Brewing unit right rack	ME-707-11204		1	
34	Shaving dregs panel	ME-707-11203		1	
33	Shaving dregs panel spring	ME-707-21204		1	
32	Brewing unit tundish	ME-707-11202		1	
31	Top filtration panel O shape ring	ME-707-31202		1	
30	Screw			1	
29	Filtration slice	ME-707-21205		1	
28	Top filtration panel	ME-707-11213		1	
27	Pressure adjusting knob	ME-707-21214		1	
26	Pressurized one way valve	ME-707-31206		1	φ5x7.5
25	Brewing valve spring	ME-707-21202		1	
24	Ball valve O shape ring	ME-707-31203		1	
23	Coffee spout tube	ME-707-11215		1	
22	Screw			4	
21	Coffee spout tube O-ring	ME-707-31204		1	φ5.6xφ1.8
20	Push panel stopper	ME-707-11219		1	
19	Push panel	ME-707-11216		1	
18	Brewing spring	ME-707-21201		1	
17	Brewing spring block slice	ME-707-11217		1	
16	Push panel sheath	ME-707-11218		1	
15	Push panel O shape ring	ME-707-31201		1	
14	Brewing cavity	ME-707-11211		1	
13	Brewing unit pipe spring	ME-707-21207		1	
12	Thimble O-ring	ME-707-31301		1	φ4.4xφ1.7
11	Pushing dregs link rod	ME-707-11206		1	
10	Hexangular thin nut 6.0	ME-707-21212		1	
9	Brewing cavity water intake	ME-707-21209		1	
8	Brewing unit Teflon tube	ME-707-32101		1	L=95mm
7	Brewing unit transform link pole	ME-707-11208		1	
6	Brewing unit slide block	ME-707-11207		2	
5	Brewing unit water pipe clamp cover	ME-707-21215		2	
4	Brewing unit water intake	ME-707-21208		1	
3	Brewing unit thin nut 8.0	ME-707-21206		1	
2	Brewing unit left rack	ME-707-11205		1	
1	Brewing unit fixing bolt	ME-707-11209		1	

NO.	NAME	Dwg NO.	Material & Specification	Qty	Remark
			Brewing core group	ME-707-01200	
			Subassembly		
			Edition	VIEW	Qty SCALE
			1.0		1 1:1
Sign	Qty	File NO.	Signature	Date	
Design			Auditing		
Norm			Approve		
				Current 1 sheet	Total 1 sheet
				Ningbo Merol Coffee Machines Co., Ltd.	

ME-707-01500



35	Grinder motor Cordsets	ME-707-4P006		1	
34	flat mat			2	
33	Pole to adjust thickness	ME-707-10151		1	
32	Grinder rubber washer	ME-707-11602		1	
31	Felly small shuck	ME-707-11511		1	
30	O ring for felly small shuck	ME-707-31504		1	
29	Outside wheel of the grinder	ME-707-21506		1	
28	Cover of outside wheel	ME-707-11512		1	
27	outside ring for regulate	ME-707-11513		1	
26	Inside ring for regulate	ME-707-11510		1	
25	Steel ball spring	ME-707-21502		1	
24	Steel ball 3.0	ME-707-21512		1	
23	Grinder fixed ring	ME-707-11508		1	
22	Grinder damping glue	ME-707-11509		1	
21	Retarder cover	ME-707-21511		1	
20	Fill tration panel O shape ring for	ME-707-31202		1	Φ32. 5xΦ4. 0
19	Felt circle	ME-707-11506		1	
18	Clear dregs plate	ME-707-21505		1	
17	Helix head mat	ME-707-11507		1	
16	Helix head			1	
15	Screw			1	
14	Steel ball 5.45	ME-707-21504		35	
13	Decelerating rubber	ME-707-31501		3	
12	Sceond step top panel	ME-707-11518		1	
11	Sceond step planet wheel	ME-707-11517		3	
10	First step top panel	ME-707-11516		1	
9	First step planet wheel	ME-707-11515		3	
8	Small axes for planet wheel	ME-707-21503		6	
7	First step panel mat	ME-707-21510		1	
6	Machince whorl screw M4X10			2	
5	Spring washer			3	
4	Retarder shuck	ME-707-11501		1	
3	Center gear	ME-707-21508		1	
2	Motor Positioning Ring	ME-707-21509			
1	Grinder motor			1	230VDC 0.07A
NO.	NAME	Dwg NO.	Material &Speci fi cation	Qty	Remark

Grinder subassembly

ME-707-01500

Edi tion VIEW Qty SCALE

1.0 1 1:1

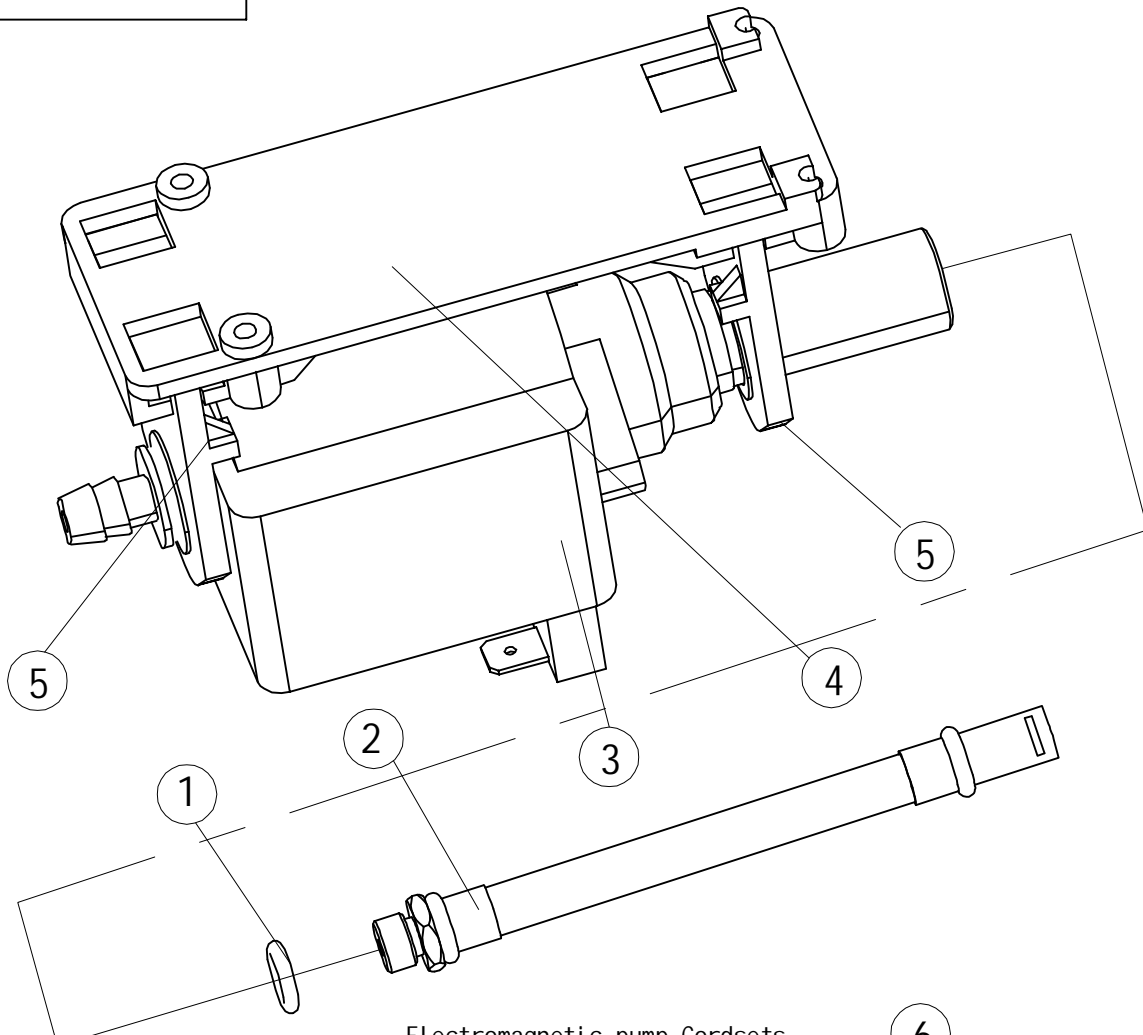
Sign Qty File NO. Signature Date

Design Auditing

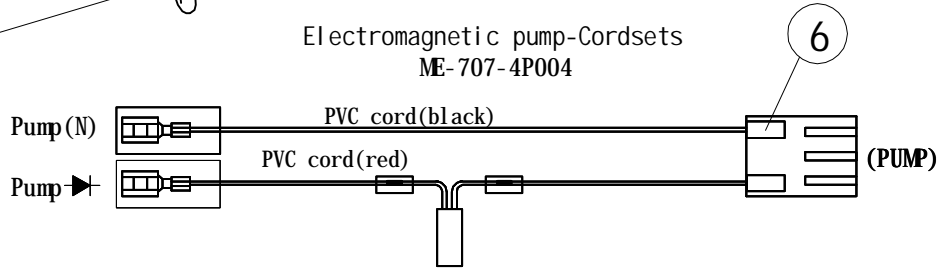
Norm Approve

Current 1 sheet Total 1 sheet  
Ningbo Merol Coffee Machines Co., Ltd.

ME-707-02000



Electromagnetic pump-Cordsets  
ME-707-4P004

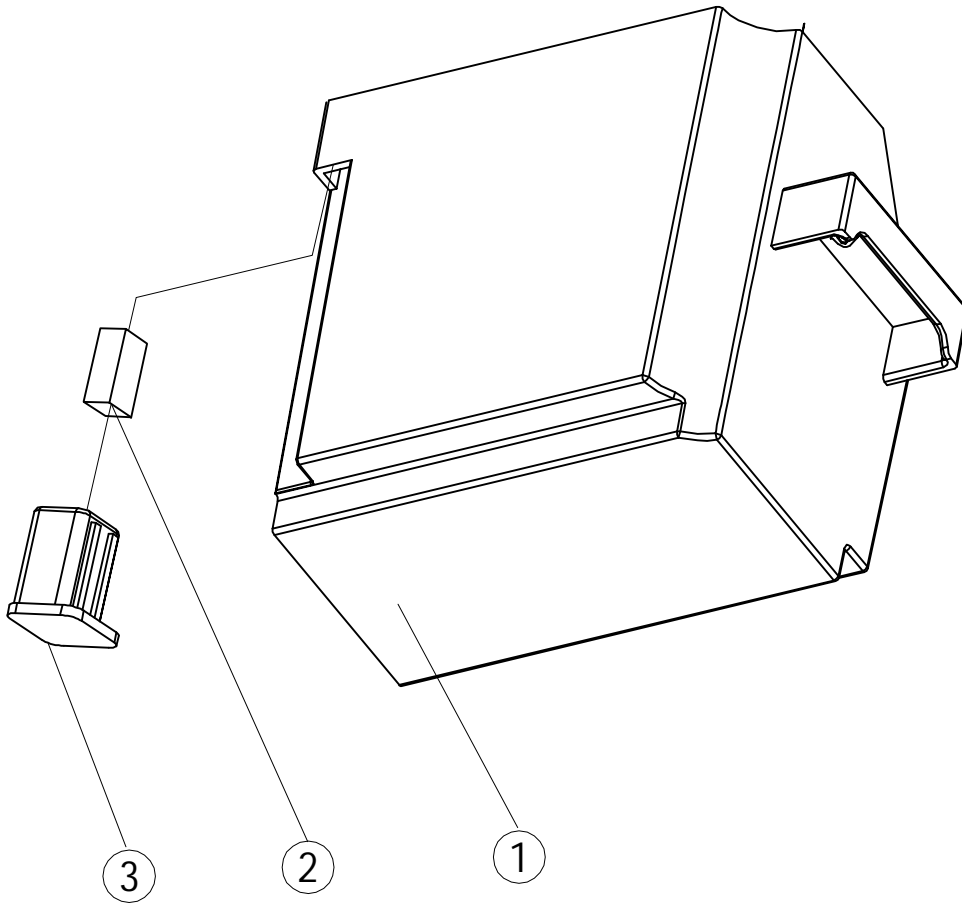


6	Electromagnetic pump-Cordsets	ME-707-4P004		1	
5	Supporting panel	ME-707-31801		2	
4	Electromagnetism pump fixed base	ME-707-11801		1	
3	Electromagnetism pump	ME-707-41802		1	230V/50HZ/70W
2	Water hose	ME-708-31801		1	
1	Coffee spout tube 0 shape ring	ME-707-31204		1	∅5.6x∅1.8

NO.	NAME	Dwg NO.	Material & Specification	Qty	Remark												
<b>Pump Suassembly</b>			<b>ME-707-02000</b>														
Sign	Qty	File NO.	Signature	Date	<table border="1" style="width: 100%;"> <tr> <td>Edi tion</td> <td>VIEW</td> <td>Qty</td> <td>SCALE</td> </tr> <tr> <td>1.0</td> <td></td> <td>1</td> <td>1:1</td> </tr> <tr> <td colspan="2">Current 1 sheet</td> <td colspan="2">Total 1 sheet</td> </tr> </table>	Edi tion	VIEW	Qty	SCALE	1.0		1	1:1	Current 1 sheet		Total 1 sheet	
Edi tion	VIEW	Qty	SCALE														
1.0		1	1:1														
Current 1 sheet		Total 1 sheet															
Design			Audi ting														
Norm			Approve														

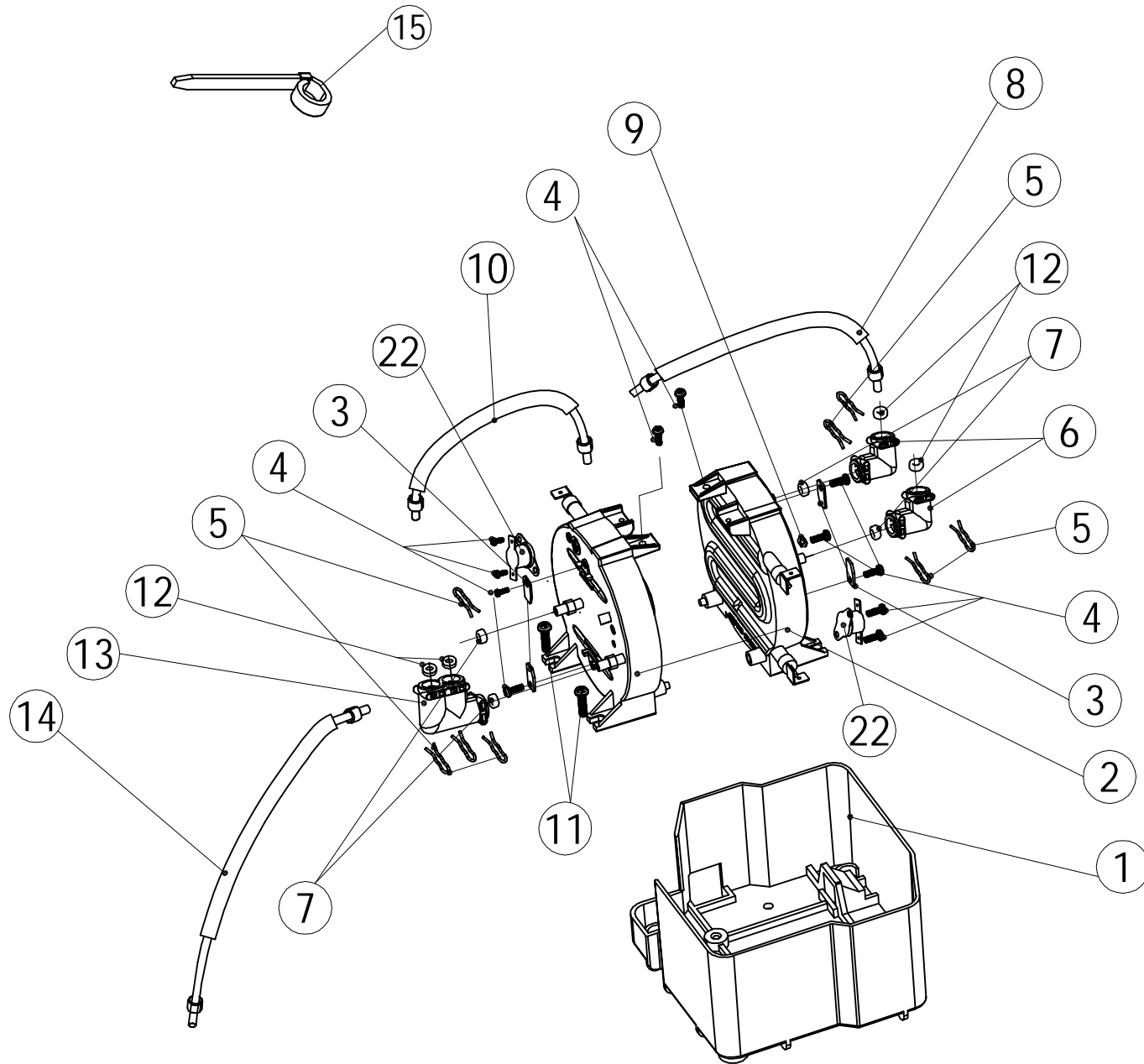
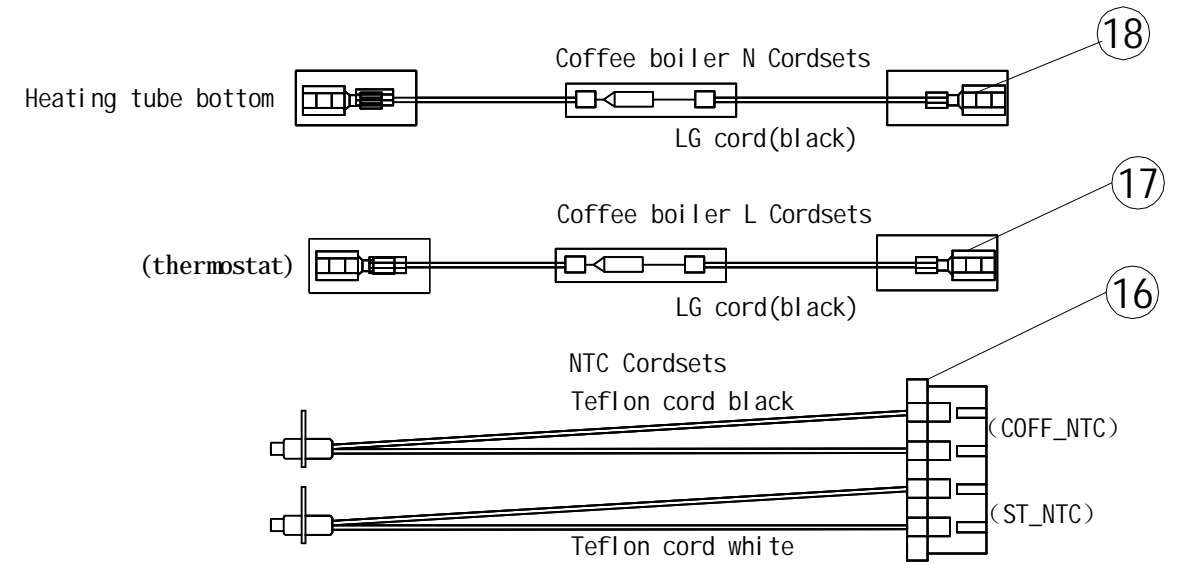
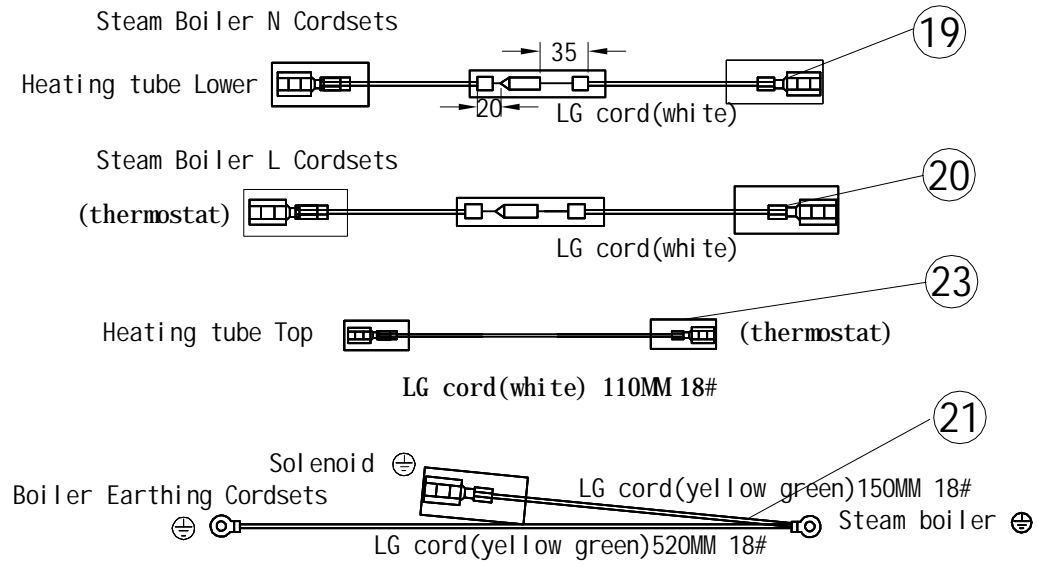
Ningbo Merol Coffee Machines Co., Ltd.

ME-707-02300



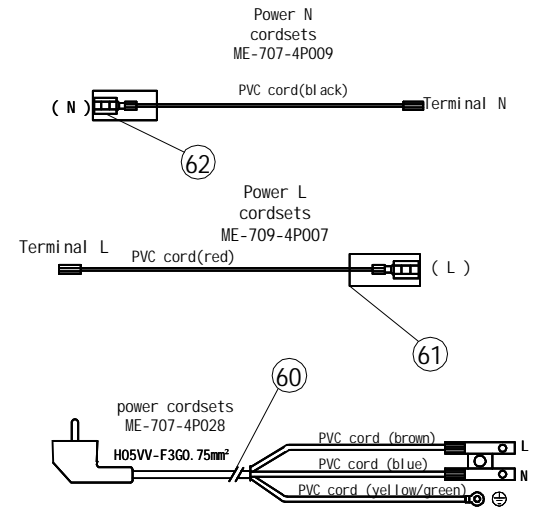
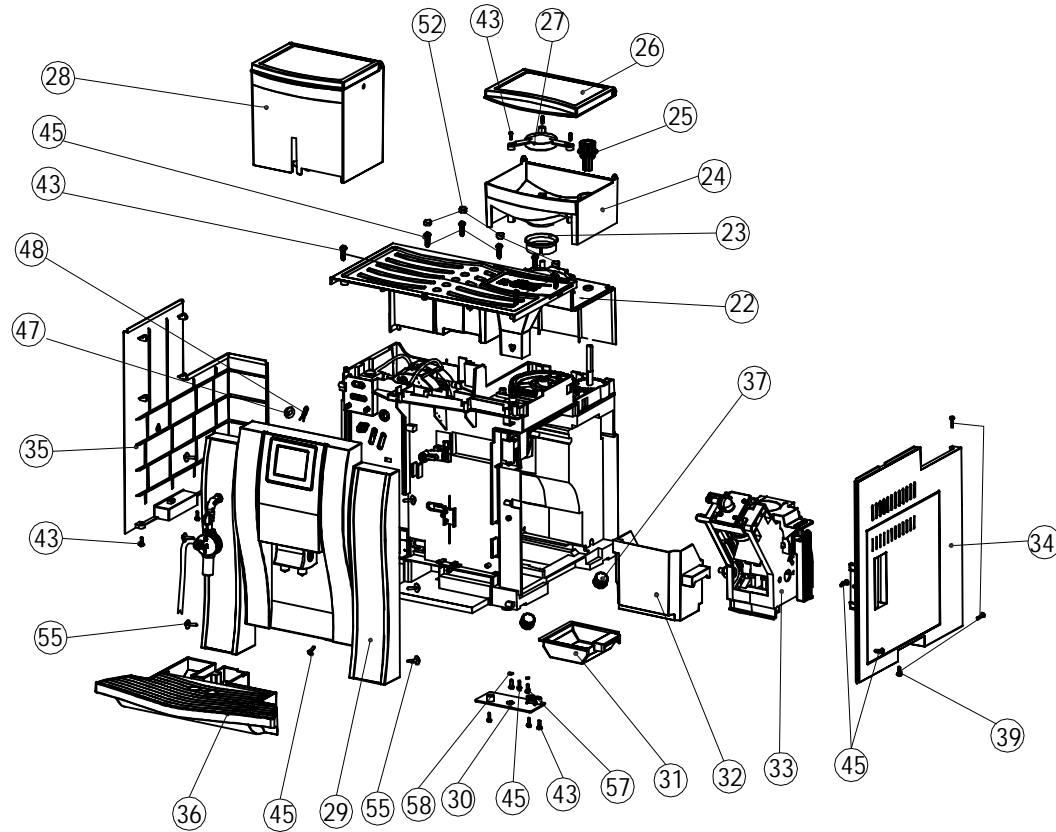
3	magnetism cover of dreg box	ME-707-11408		1	
2	water tank magnetism	ME-707-20502		1	
1	Bean drgs box	ME-707-11407		1	
NO.	NAME	Dwg NO.	Material & Specification	Qty	Remark

					Bean dregs Box Subassembly		ME-707-02300	
							Edition	VIEW
					1.0		1	1:1
Sign	Qty	File NO.	Signature	Date	Current 1 sheet		Total 1 sheet	
Design					Auditing			
Norm					Approve			
Ningbo Merol Coffee Machines Co., Ltd.								



23	thermostat cord(white)			2	
22	thermostat			2	
21	Boiler Earthing Cordsets	ME-709-4P015		1	
20	Steam Boiler L Cordsets	ME-708-4P010		1	
19	Steam Boiler N Cordsets	ME-708-4P011		1	
18	Coffee boiler N Cordsets	ME-708-4P013		1	
17	Coffee boiler L Cordsets	ME-708-4P012		1	
16	NTC Cordsets	ME-707-4P025		1	
15	Ties			1	
14	Teflon tube		Coffee boiler-Core inlet valve	1	
13	Three joints	ME-708-11701	PEI 1010	1	
12	Pipe buckle O-ring	ME-707-30904	High tear Silicone	4	∅3.6X∅7X3.7
11	Screw		+JTP 4x16 NI	2	
10	Teflon tube		Steam boiler-Coffee boiler	1	
9	Spring washer 3.0		65Mn ∅3.0	1	Earthing Line
8	Teflon tube		Steam Boiler-Solenoid Valve	1	
7	Boiler water ring	ME-707-30905	High tear Silicone	4	∅4.6X∅8X3.7
6	Right-angle connector	ME-708-11703	PEI 1010	2	
5	Steam Buckle 1		SUS304	8	
4	BTP3X8 Screw		#BTP3X8 SUS	13	
3	Fuse Fixed Plate	ME-707-21707	SUS430 T1.0	4	
2	Boiler Body	ME-708-21701		2	
1	Insulating sheath	ME-708-11702	PA66 A3AEG6	1	
NO.	NAME	Dwg NO.	Material & Specification	Qty	Remark

Heating Systems					ME-709-01700					
					Edi tion	VIEW	Qty	SCALE		
Sign	Qty	File NO.	Signature	Date	1.0	⊕ ⊞	1	1:1		
Design				Audi ting			Current 1 sheet		Total 1 sheet	
Norm				Approve			Ningbo Merol Coffee Machines Co., Ltd.			



65	Door/Wastewater/carved slag switch Cordsets	ME-707-4P022		1	
64	Water tank near the switching Cordsets	ME-707-4P014		1	
63	Corre fixing board Cordsets	ME-707-4P023		1	
62	Power N cordsets	ME-707-4P004		1	
61	Power L cordsets	ME-709-4P007		1	
60	power cover board	ME-707-4P028		1	
59	Circlip meson		Φ 8X Φ 2.6X0.3	1	AWECO
58	Spring washer 3.0		65Mn Φ 3.0	2	
57	Screw		+STP 3X6 SUS302	2	
56	Reducer	ME-709-30101	Silicone		
55	Screw		+JTN 3X12 ni	6	
54	Fuse Fixed Plate	ME-707-21707	SUS430 T1.0	1	
53	Back top cover rubber plug B	ME-707-30104	Silicone	1	
52	Back top cover rubber plug A	ME-707-30103	Silicone	3	
51	Transformers Separate plank	ME-709-10120	PP+GF20%	1	
50	Ties			5	

49	Silicone tube		Silicone OD9.0-ID5.0	2	
48	Steam Buckle 1		SUS 304	3	
47	Pipe buckle O-ring	ME-707-30902	Dow Corning Silicone	3	
46	Hex Nuts		ISOZ M5	2	
45	Screw		#BTP 3X10 SUS	8	
44					
43	Screw		#JTP 3X12 SUS	20	
42	Screw		+BTP 4X14 SUS302	8	
41					
40	Screw		+JTP 4X16 NI	12	
39	Screw		+JTP 3X12 ni	11	
38	Screw		+JTP 3.5X14 NI	4	
NO.	NAME	Dwg NO.	Material&Specification	Qty	Remark

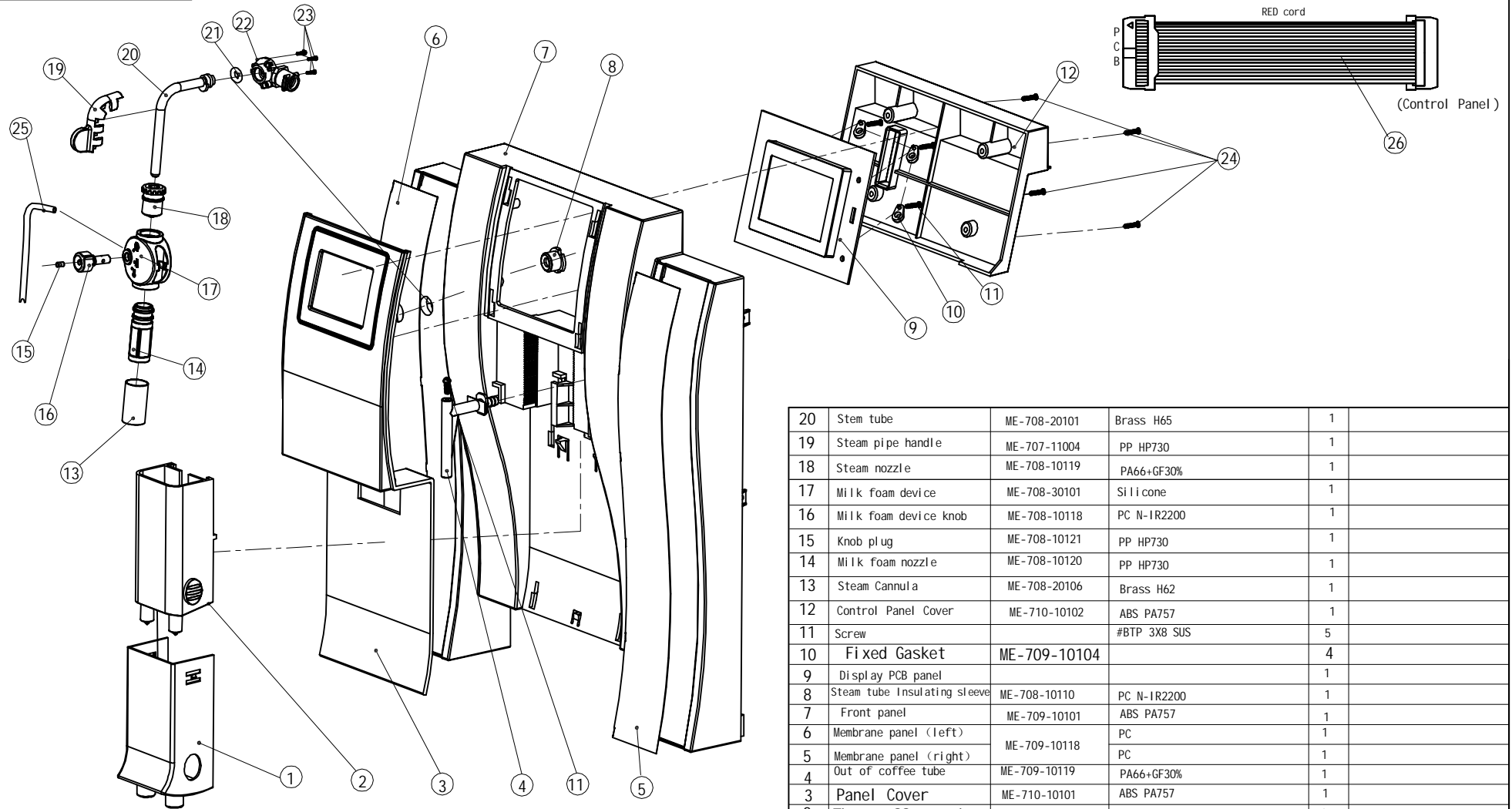
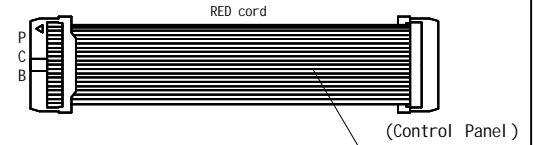
All assembly				ME-710-00100			
1.0	⊕	1		Current 2 sheet	Total 2 sheet		
Ningbo Merol Coffee Machines Co., Ltd.							
Design	Auditing						
Norm	Approve						





ME-710-00101

Control Panel cordsets  
ME-707-4P027



20	Stem tube	ME-708-20101	Brass H65	1	
19	Steam pipe handle	ME-707-11004	PP HP730	1	
18	Steam nozzle	ME-708-10119	PA66+GF30%	1	
17	Milk foam device	ME-708-30101	Silicone	1	
16	Milk foam device knob	ME-708-10118	PC N-IR2200	1	
15	Knob plug	ME-708-10121	PP HP730	1	
14	Milk foam nozzle	ME-708-10120	PP HP730	1	
13	Steam Cannula	ME-708-20106	Brass H62	1	
12	Control Panel Cover	ME-710-10102	ABS PA757	1	
11	Screw		#BTP 3X8 SUS	5	
10	Fixed Gasket	ME-709-10104		4	
9	Display PCB panel			1	
8	Steam tube Insulating sleeve	ME-708-10110	PC N-IR2200	1	
7	Front panel	ME-709-10101	ABS PA757	1	
6	Membrane panel (left)	ME-709-10118	PC	1	
5	Membrane panel (right)		PC	1	
4	Out of coffee tube	ME-709-10119	PA66+GF30%	1	
3	Panel Cover	ME-710-10101	ABS PA757	1	
2	Then coffee tank	ME-709-10104	ABS PA777E	1	
1	Coffee slot to take over	ME-709-10103	ABS PA757	1	
NO.	NAME	Dwg NO.	Material & Specification	Qty	Remark

26	Control Panel Cordsets			1	
25	Sucking tubes		∅3X∅6	1	
24	Screw		+JTP 3X12 ni	4	
23	Screw		+JTP 2X12 NI	3	
22	Steam tube tie-in	ME-707-11001	PA66 A3EG6	1	
21	Coffee spout tube O-ring	ME-707-31204	Silicone	2	∅ 5.6x ∅ 1.8

Front panel  
Subassembly

ME-710-00101

Edi tion VIEW Qty SCALE

1.0



1

SCALE

Current 1 sheet Total 1 sheet

Ningbo Merol Coffee Machines  
Co., Ltd.

Sign Qty File NO. Signature Date

Design

Auditing

Norm

Approve